

**norvil**  
*siente tu uniforme*



**Beauty  
and  
Healthcare**

CATALOGUE 2021/22



We are happy to show you our new Beauty and Healthcare collection made up of comfortable and elastic clothes with the innovative design that always accompanies and characterizes Norvil uniforms. In this collection we have worked as basic concept the comfort in the daily work. It is recommended for the personnel in the healthcare, beauty, spa & wellness, cleaning sectors, among others. Because we don't only want all of them to wear our uniforms, we also want them to **FEEL** them.



TABLE OF CONTENTS

<b>1</b>	<b>PREMIUM NATURA® STRETCH COLLECTION ..</b>	<b>1 - 12</b>			
	Tunics .....	5 - 9			
	T-Shirts .....	10 - 11			
	Trousers .....	8, 12			
	Caps .....	10			
<b>2</b>	<b>NATURA® .....</b>	<b>13 - 20</b>			
	Tunics .....	15 - 16			
	T-Shirts .....	17			
	Trousers .....	18			
	Polo-Shirts .....	19 - 20			
<b>3</b>	<b>TWILLS .....</b>	<b>21 - 56</b>			
	STRETCH COTTON TWILL .....	21 - 27			
	Coats .....	23 - 24			
	Tunics .....	25 - 26			
	Trousers .....	27			
	TWILL AND RIB-KNIT FABRIC .....	28 - 37			
	Coats .....	29 - 30			
	Tunics .....	31 - 37			
	TWILLS .....	21 - 56			
	SUSTAINABLE TWILL .....	38 - 45			
	Coats .....	42			
	Tunics .....	39, 40, 41, 43 y 44			
	Trousers .....	45			
	TWILL / INDANTHRENE® COLORS .....	46 - 56			
	Coats .....	47 - 48			
	Tunics .....	49, 50, 52, 54 y 55			
	Trousers .....	53, 56			
	Caps .....	47, 51			
<b>4</b>	<b>ANTIBACTERIAL MICROFIBER .....</b>	<b>57- 64</b>			
	Tunics .....	58 - 63			
	Trousers .....	64			
<b>5</b>	<b>STRETCH MICROFIBER .....</b>	<b>65 - 74</b>			
	Kimono & Coats .....	67 - 73			
	Trousers .....	74			



TABLE OF CONTENTS

<b>6</b>	<b>OTHER TEXTURES .....</b>	<b>75 - 78</b>	<b>7</b>	<b>HYGIENIC PRODUCTS .....</b>	<b>79 - 85</b>
	PIQUE .....	75 - 76		Gowns .....	79 - 83
	SEERSUCKER .....	77		Caps, Sleeves and Shoe covers .....	. 84
	COTTON-RICH POPLIN .....	78	<b>8</b>	<b>SIZE GUIDE .....</b>	<b>86 - 91</b>
			<b>9</b>	<b>MODEL LIST .....</b>	<b>92 - 94</b>





**norvil**

**Beauty  
*and*  
Healthcare**



1

**PREMIUM  
NATURA® STRETCH  
COLLECTION**



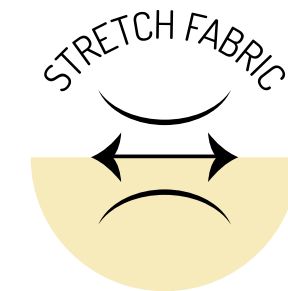
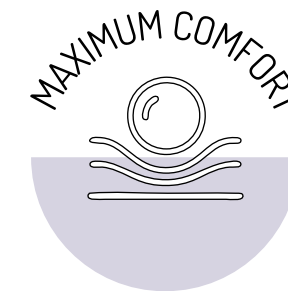
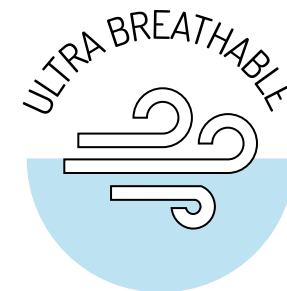






## PREMIUM NATURA® STRETCH COLLECTION

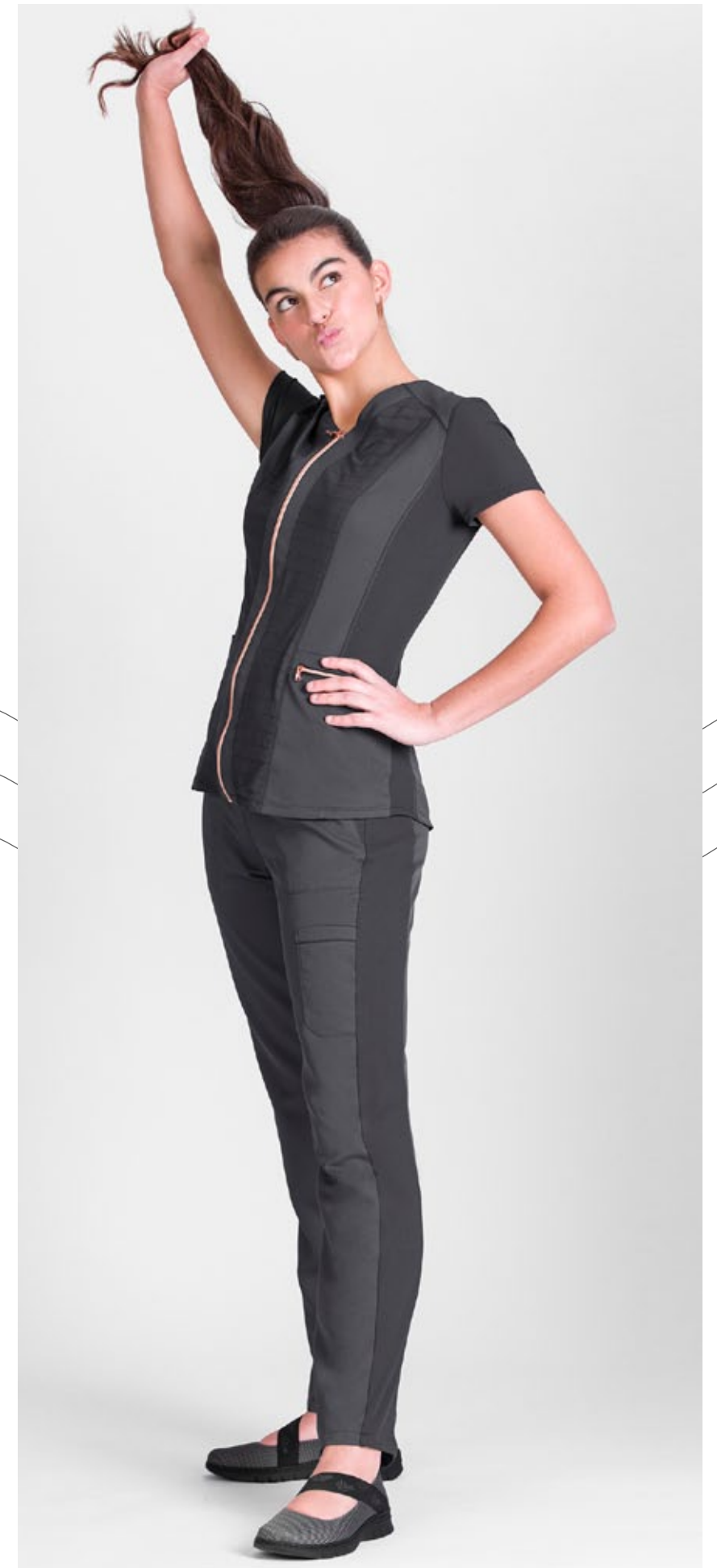
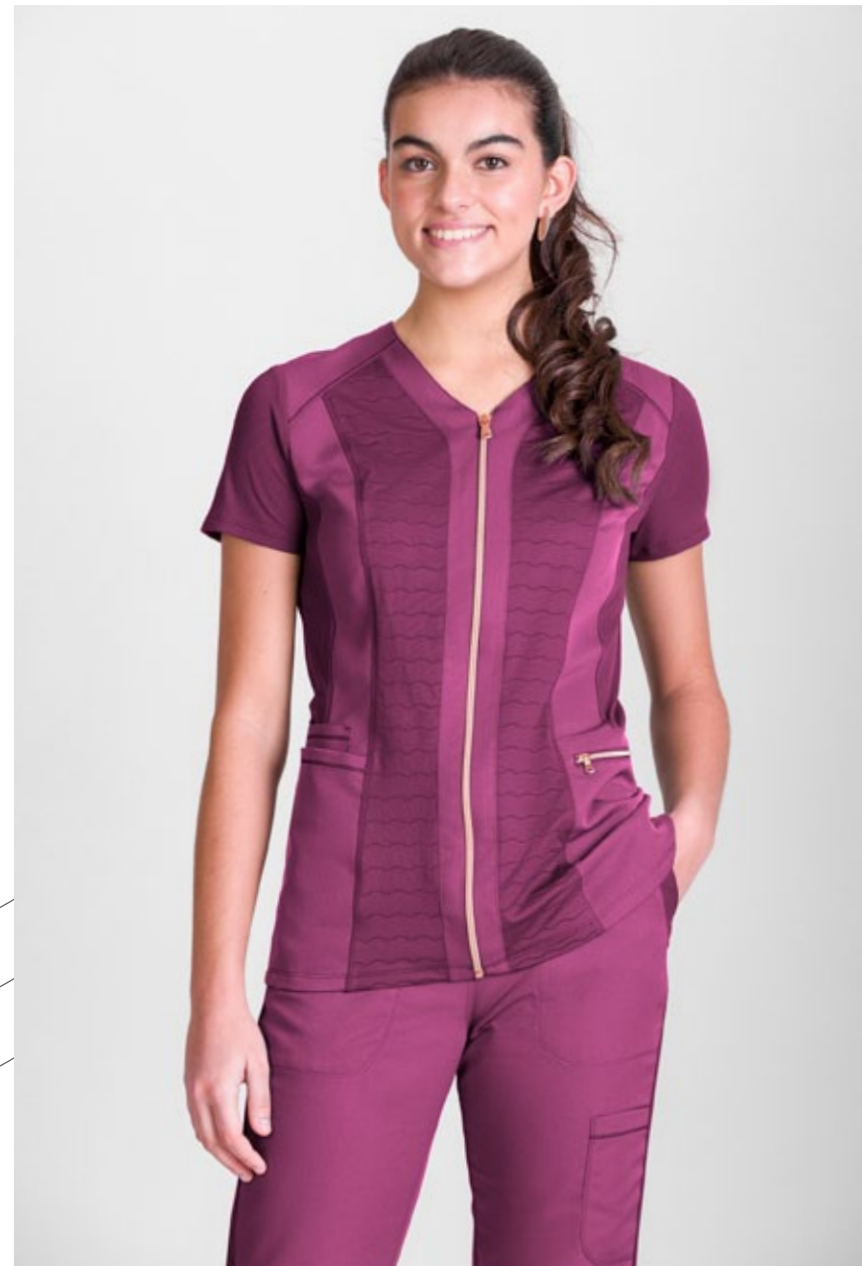
Our Natura® stretch fabric makes moisture rapidly evaporate by concentrating it in its outer side, it is washable up to 60 degrees and it does not require ironing. The stretch fiber offers a comfortable wear and allows freedom of movement.



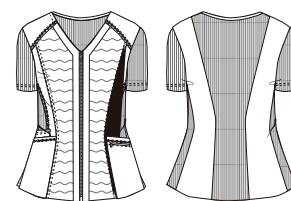
Natura® stretch composition:  
**100% Natura® stretch Polyester**  
 Rib knit fabric and Fancy fabric:  
**95% Polyamide - 5% Elastane**







**1146** WOMEN'S S/S TUNIC V COLLAR WITH ZIPPER  
PREMIUM NATURA® STRETCH



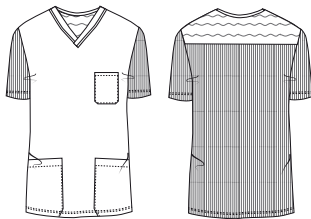
- 013 Gray
- 080 Fuchsia
- 141 Seaport

SIZES: **XS - 2XL**



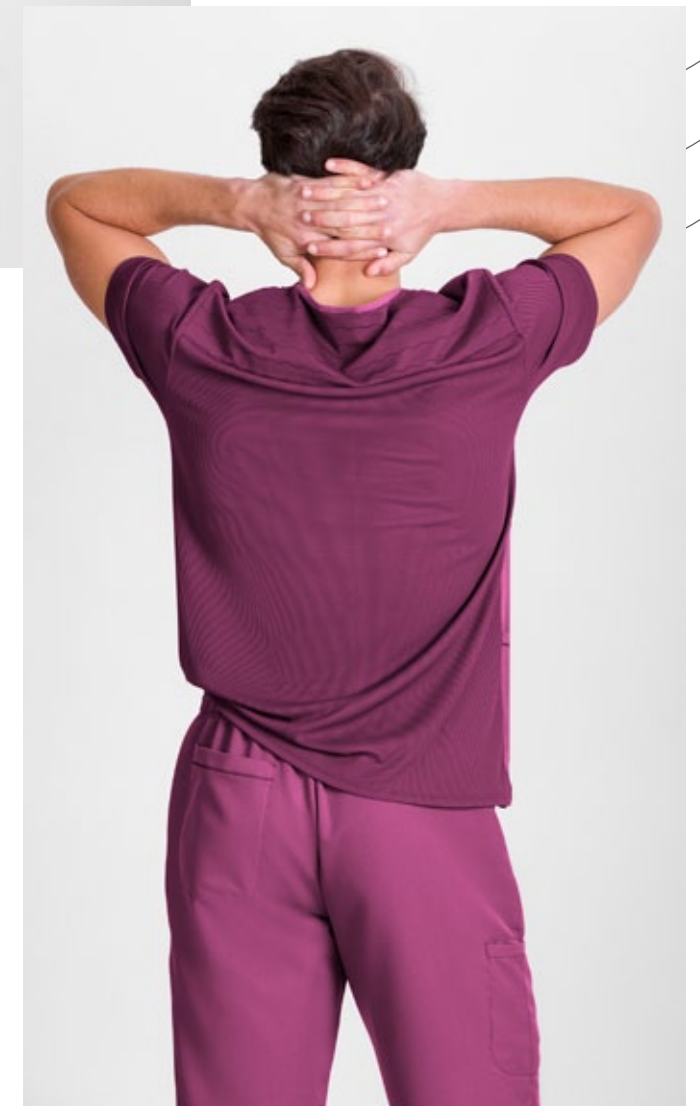
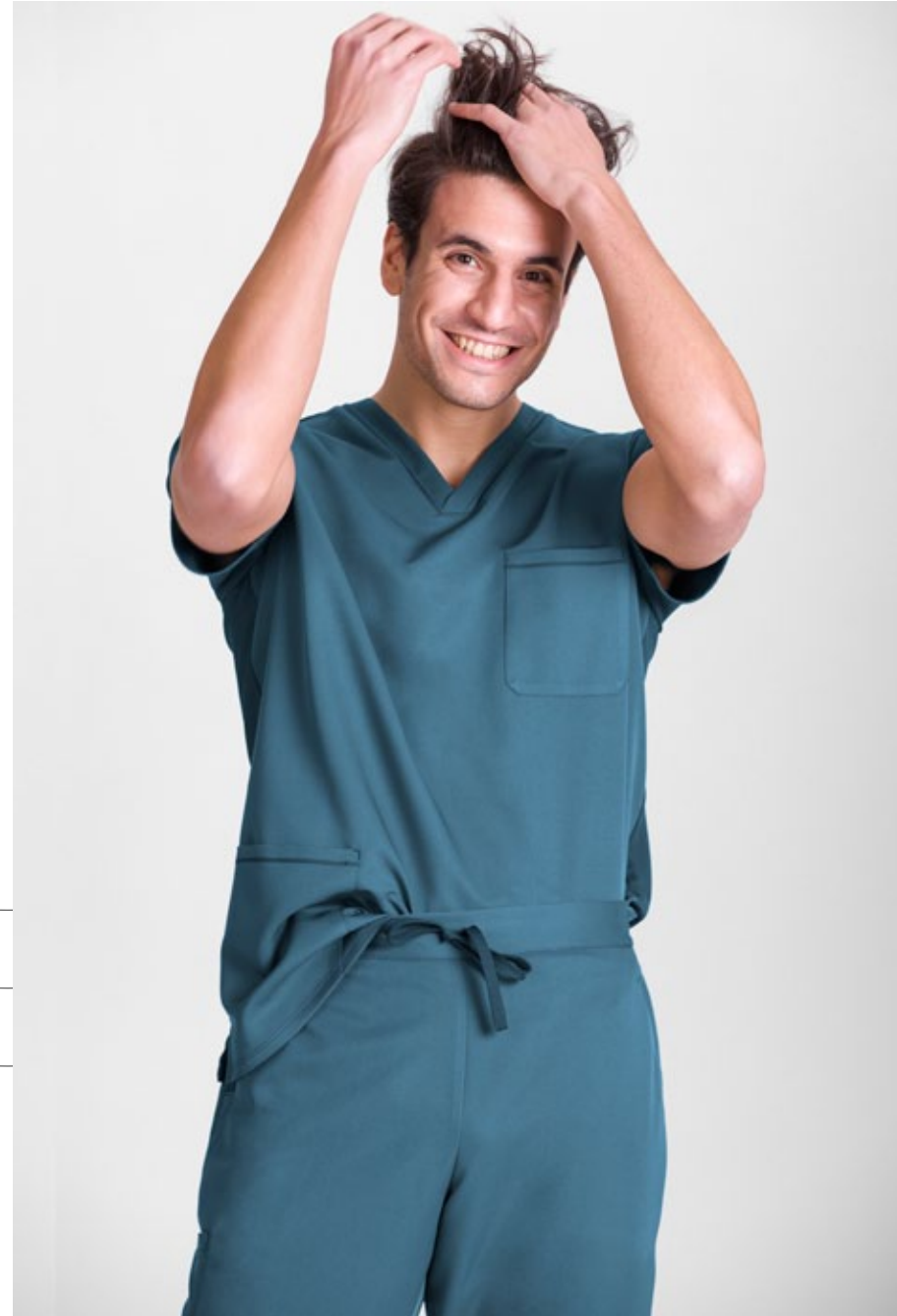


**1149** UNISEX S/S TUNIC V COLLAR  
PREMIUM NATURA® STRETCH

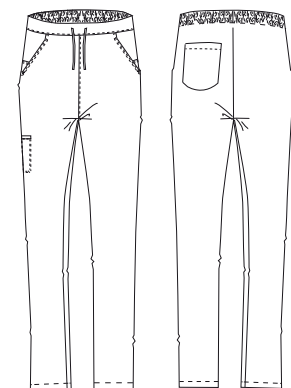


- 013 Gray
- 080 Fuchsia
- 141 Seaport

SIZES: **XS - 2XL**



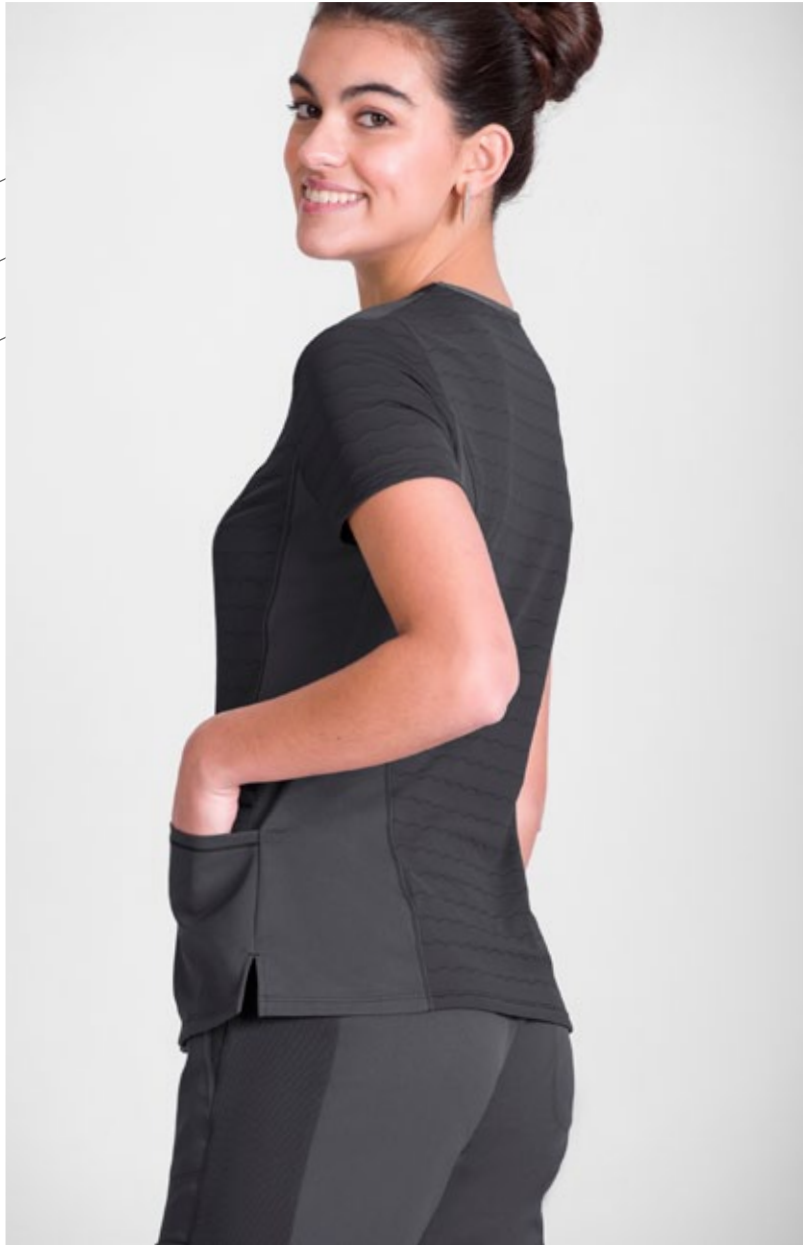
**1718** UNISEX SCRUB TROUSERS  
PREMIUM NATURA® STRETCH



- 013 Gray
- 080 Fuchsia
- 141 Seaport

SIZES: XS - 2XL





**1147** WOMEN'S SHORT SLEEVE TUNIC V COLLAR  
PREMIUM NATURA® STRETCH

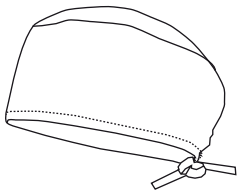


- 013 Gray
- 080 Fuchsia
- 141 Seaport

SIZES: XS - 2XL



**593** REVERSIBLE SCRUB CAP  
PREMIUM NATURA® STRETCH



- 013 Gray
- 080 Fuchsia
- 141 Seaport

ONE SIZE

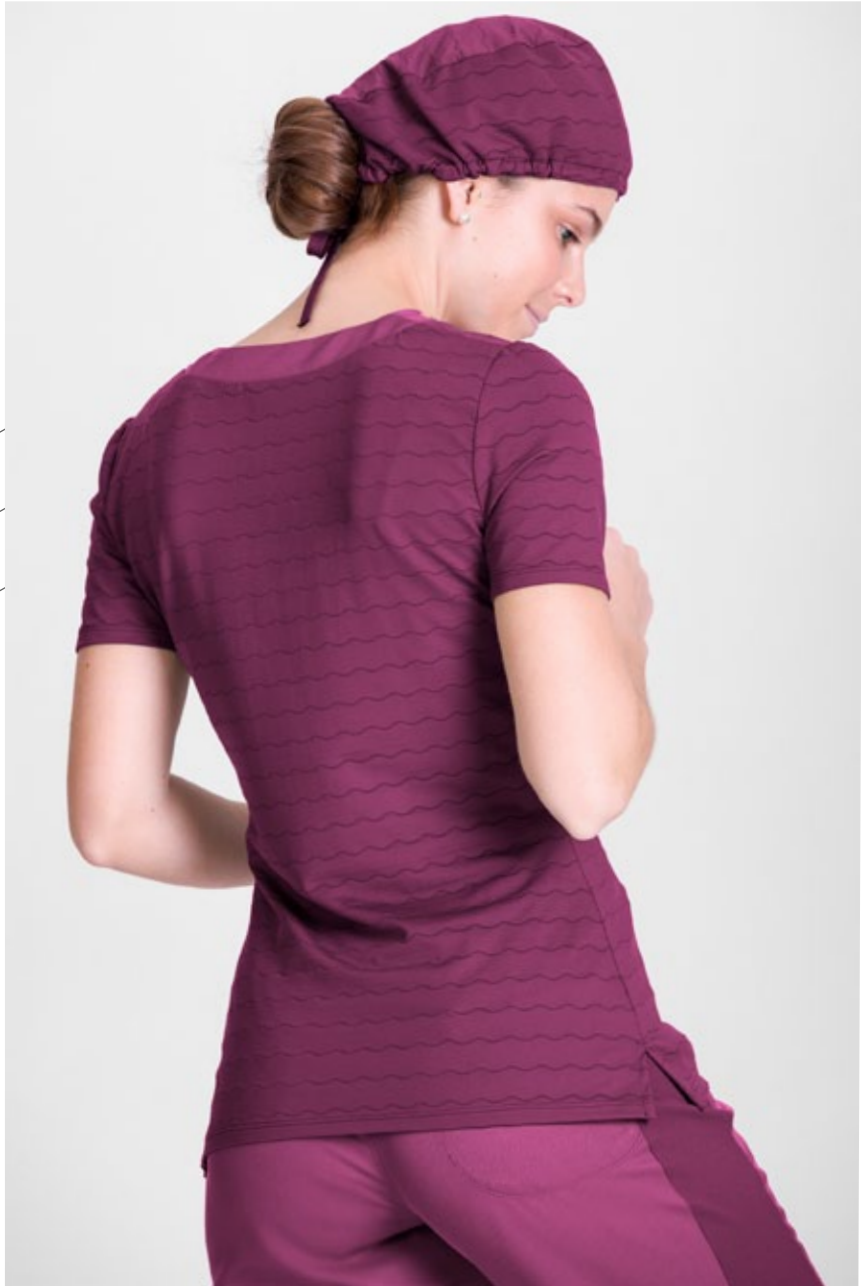
**1739** WOMEN'S SHORT SLEEVE T-SHIRT NECKLINE  
BUSTIER PREMIUM NATURA® STRETCH



- 013 Gray
- 080 Fuchsia
- 141 Seaport

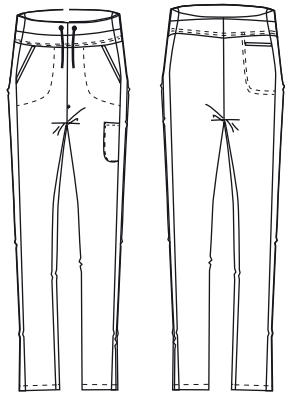
SIZES: XS - 2XL







**1717** WOMEN'S SCRUB TROUSERS  
PREMIUM NATURA® STRETCH



- 013 Gray
- 080 Fuchsia
- 141 Seaport

SIZES: XS - 2XL



**norvil**

**Beauty  
*and*  
Healthcare**

**2**

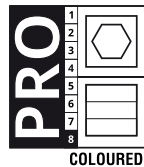
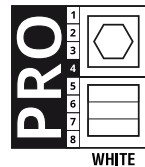
**NATURA®**





**NATURA®**

Our Natura® fabric line has all the advantages of cotton and none of its disadvantages. These high-endurance fibers make moisture rapidly evaporate by concentrating it in its outer side. Clothes are color-lasting, do not need to be ironed, they show no deformation along its lifetime and they resist industrial washing.



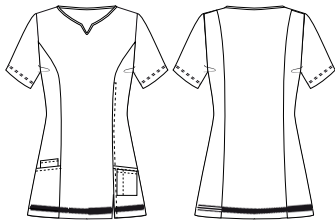
Natura® composition:  
**55% COTTON - 45% NATURA®**







1728 NATURA® WOMEN'S TUNIC TEAR NECKLINE BI-COLOR

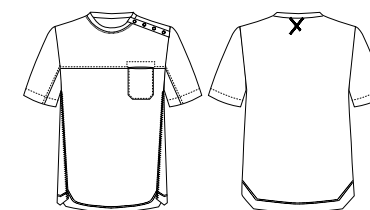


019 Navy + white

SIZES: XS - 2XL



**1732** NATURA® MEN'S T-SHIRT



○ 001 White

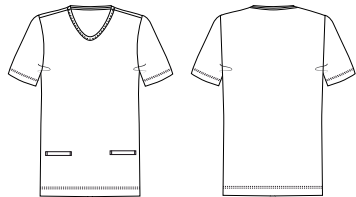
● 019 Navy

SIZES: XS - 2XL





**1738** WOMEN'S T-SHIRT SHORT SLEEVE NATURA®



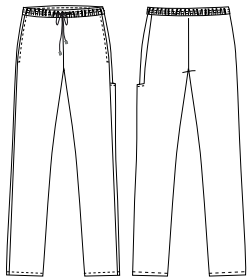
○ 001 White

● 019 Navy

SIZES: XS - 2XL



**1715** UNISEX ELASTIC WAIST  
SCRUB TROUSERS NATURA®



○ 001 White

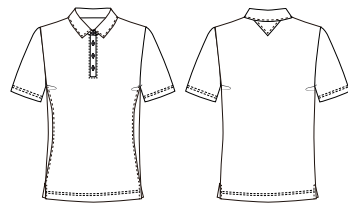
● 019 Navy

SIZES: **XS - 2XL**



Beauty  
and  
Healthcare

1724 WOMEN'S S/S POLO-SHIRT  
NATURA®



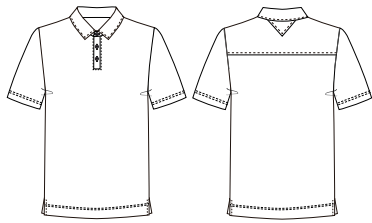
- 000 Black
- 001 White
- 011 Light blue
- 019 Navy

SIZES: XS - 2XL





**1722** MEN'S S/S POLO-SHIRT NATURA®



000 Black

001 White

011 Light blue

019 Navy

SIZES: XS - 2XL



**norvil**

**Beauty  
*and*  
Healthcare**



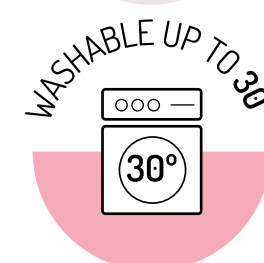
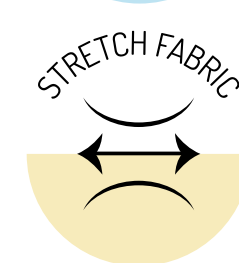
**3**

**TWILLS**



## STRETCH COTTON TWILL

Our stretch cotton twill is an elastic and breathable fabric with a soft-touch finish that provides a high comfort level.



Composition:

**97% COTTON - 3% ELASTANE**

Grammage:

**190 gr/m²**

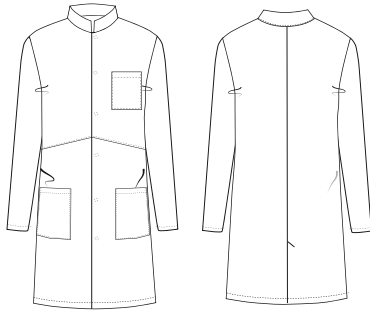


Beauty  
and  
Healthcare



**norvil**

**1007** MEN'S COAT MANDARIN COLLAR AND STRETCH COTTON

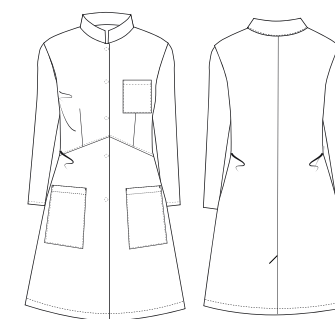


○ 001 White

SIZES: XS - 2XL



**1067** WOMEN'S COAT MANDARIN COLLAR AND STRETCH COTTON



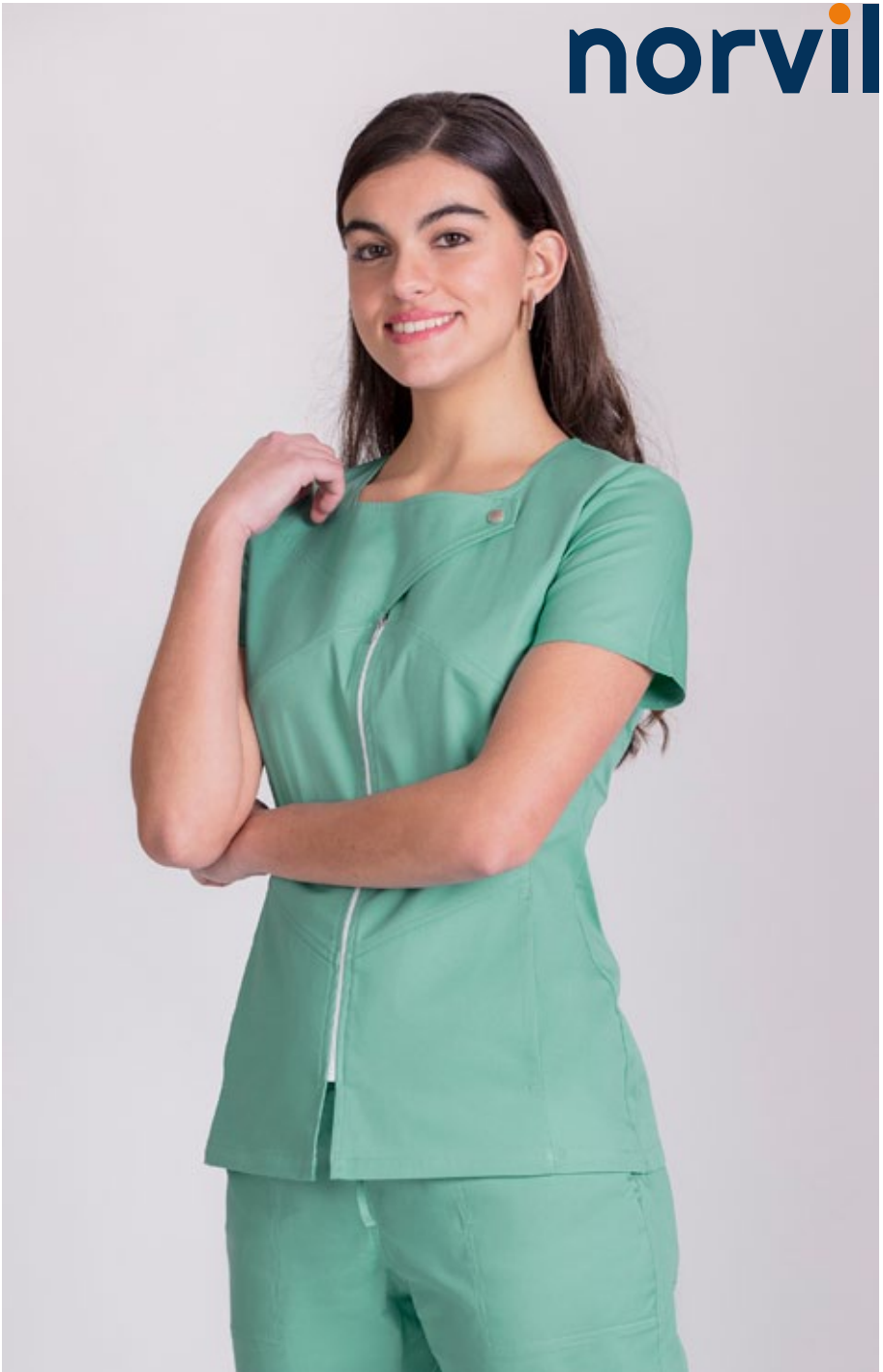
001 White

SIZES: XS - 2XL



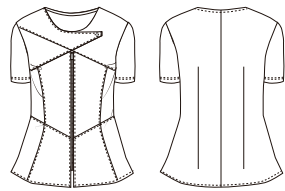


Beauty  
and  
Healthcare



**norvil**

**1140** WOMEN'S S/S TUNIC STRETCH COTTON

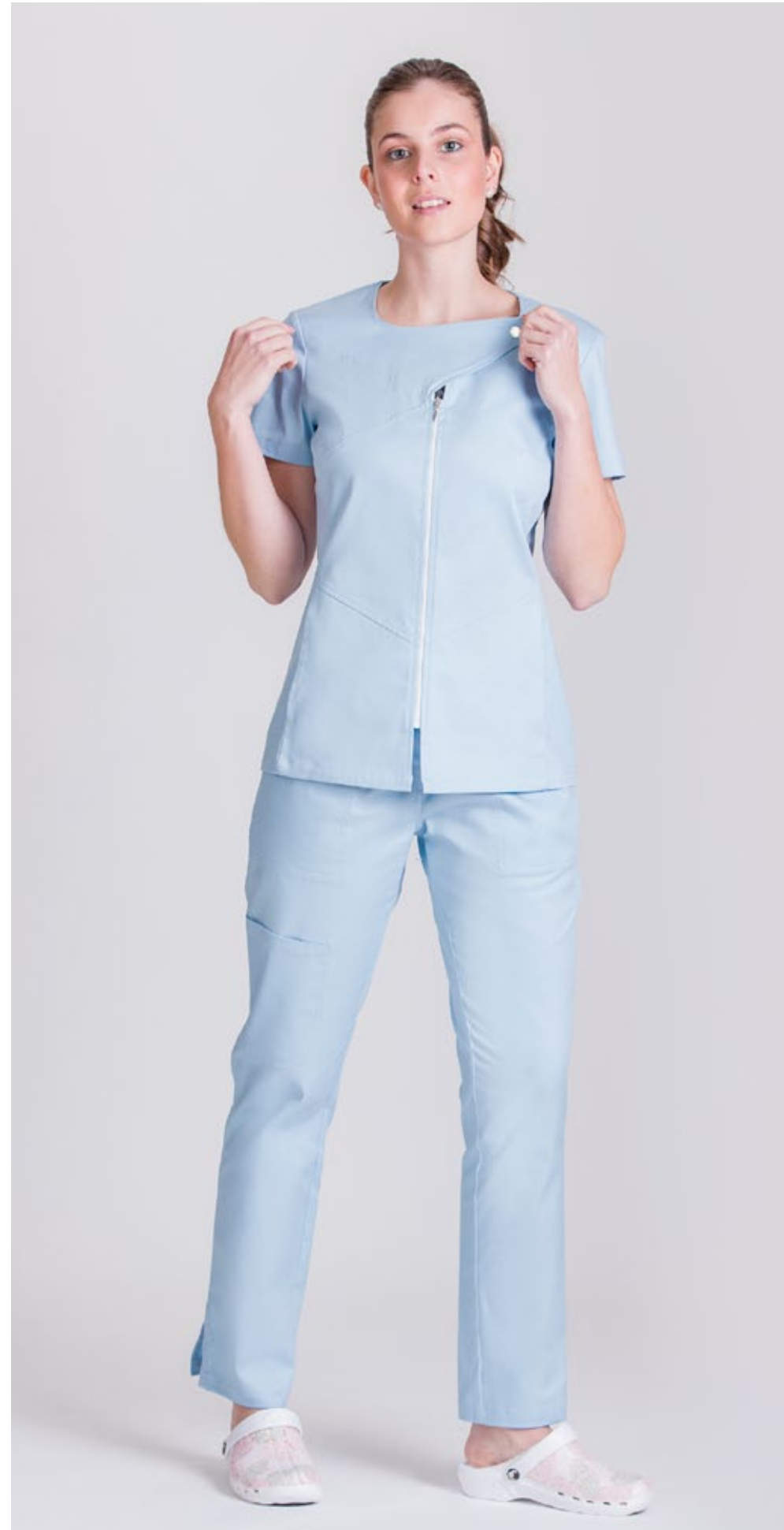


SIZES: XS - 2XL

001 White

011 Light blue

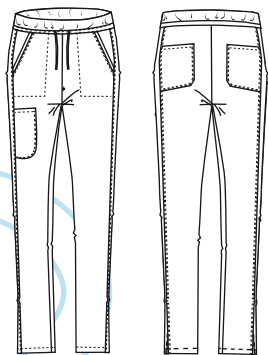
372 Mint







**1709** WOMEN'S TROUSERS STRETCH COTTON



○ 001 White

● 372 Mint

○ 011 Light blue

SIZES: XS - 2XL





## TWILL AND RIB - KNIT FABRIC

It combines the resistance and durability of our twill with the comfort provided by the rib knit fabric.



Twill composition:

**67% POLYESTER - 33% COTTON**

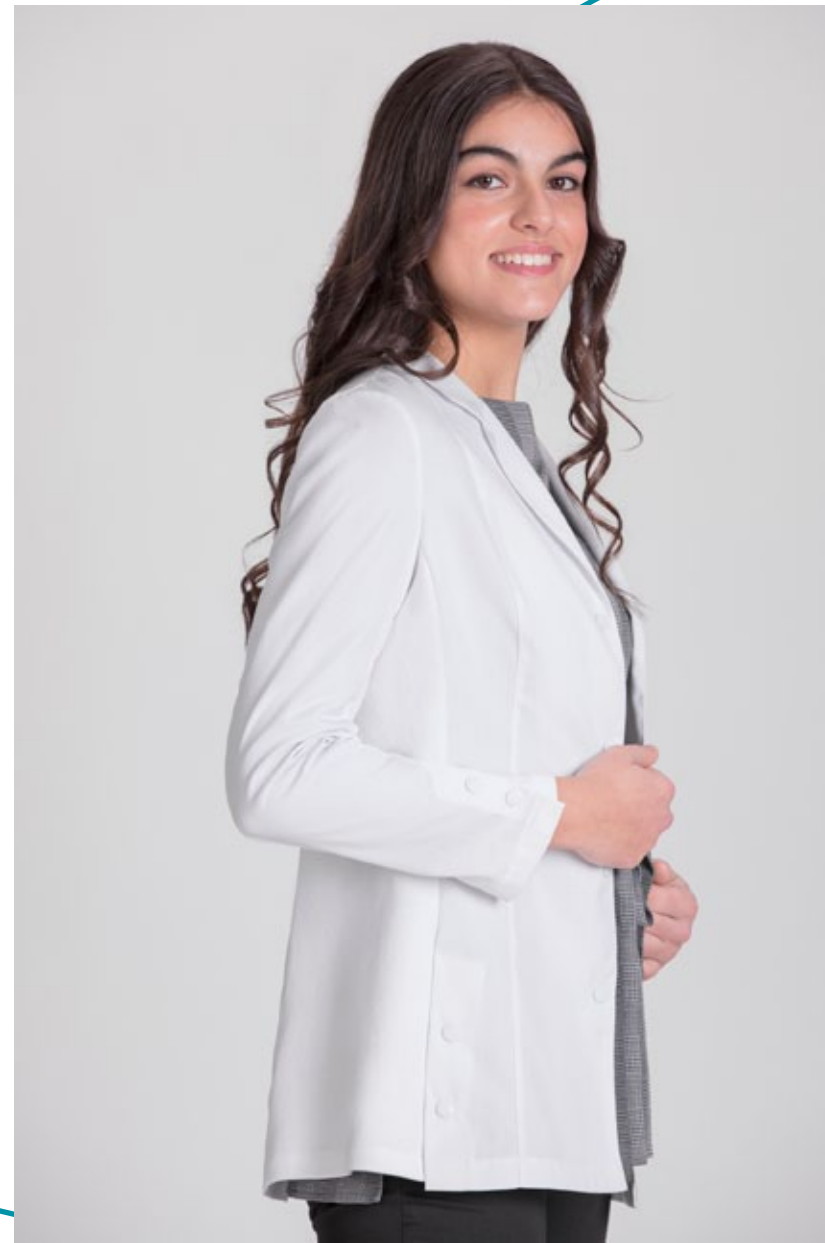
Twill Grammage:

**195 gr/m<sup>2</sup>**

Rib-knit fabric composition:

**91% POLYESTER - 9% ELASTANE**





**1053** WOMEN'S STRETCH SHORT COAT

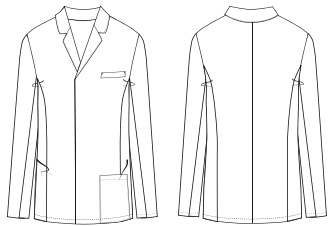


○ 001 White

SIZES: XS - 2XL



**1005 MEN'S STRETCH SHORT COAT**



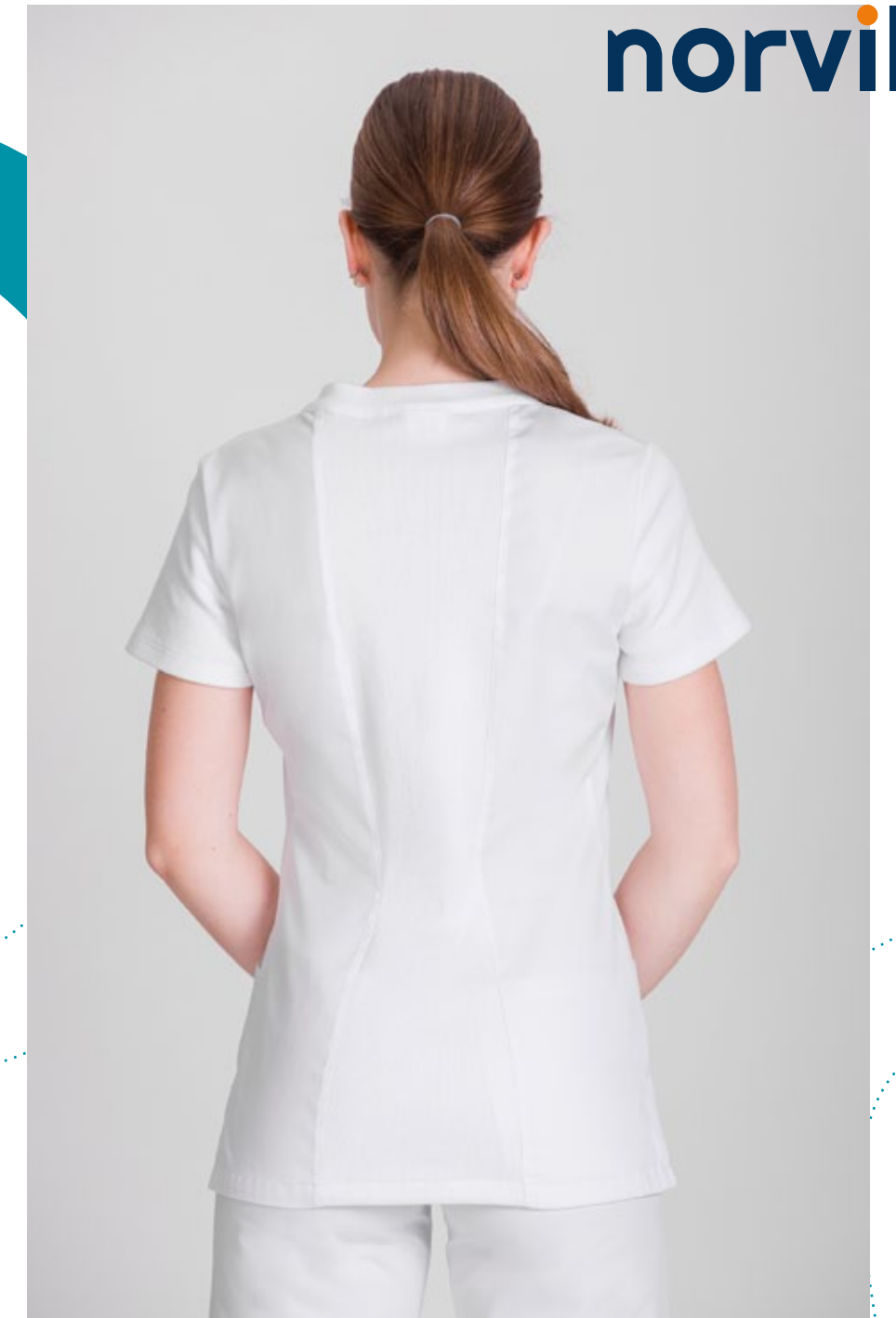
001 White

SIZES: XS - 2XL

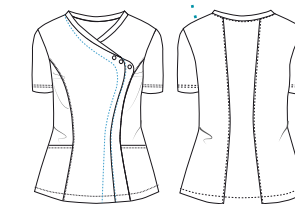


Beauty  
and  
Healthcare

**norvil**



**1176** WOMEN'S SHORT SLEEVE TUNIC WITH STITCH,  
CENTER BACK AND SLEEVE IN RIB-KNIT



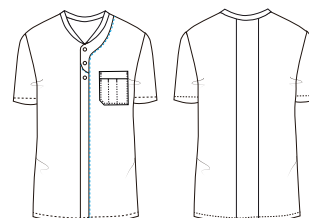
181 White + turquoise

190 White + plum

SIZES: XS - 2XL



**1168** MEN'S SHORT SLEEVE TUNIC WITH STITCH, COLLAR AND CENTER BACK IN RIB-KNIT



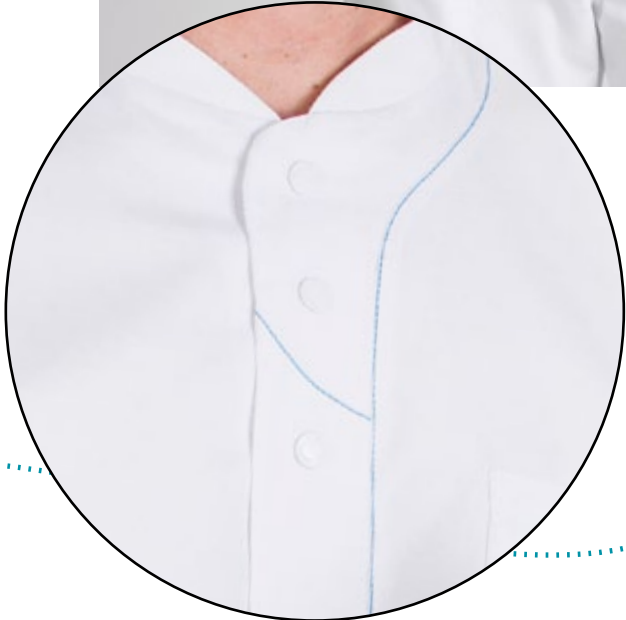
181 White + turquoise

190 White + plum

SIZES: **XS - 2XL**



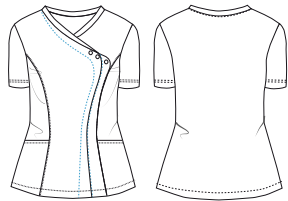
Beauty  
*and*  
Healthcare



**norvil**



**1141** WOMEN'S SHORT SLEEVE TUNIC BICOLOR  
RIB COLLAR



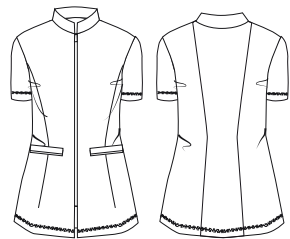
- 411 White + light blue
- 472 White + mint

SIZES: **XS - 2XL**



Beauty  
*and*  
Healthcare

**1177** WOMEN'S SHORT SLEEVE TUNIC RIBBED  
MANDARIN COLLAR



● 000 Black

○ 001 White

SIZES: XS - 2XL



**norvil**

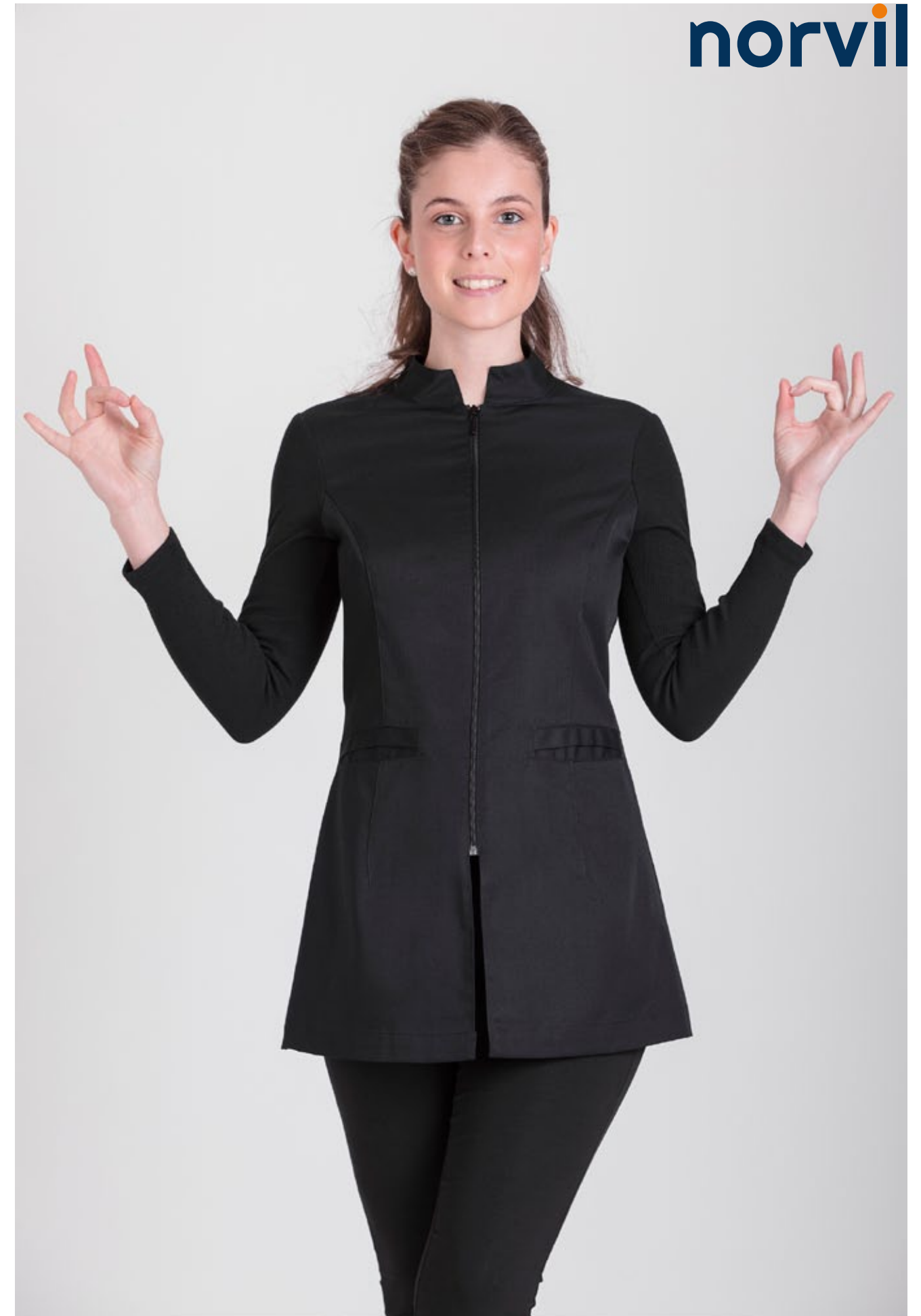




**1177** WOMEN'S SHORT SLEEVE TUNIC RIBBED  
MANDARIN COLLAR







**1178** WOMEN'S L/S TUNIC RIBBED MANDARIN COLLAR



● 000 Black

○ 001 White

SIZES: XS - 2XL



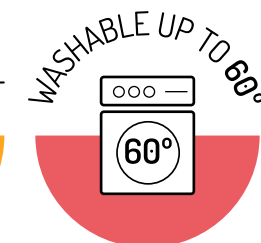
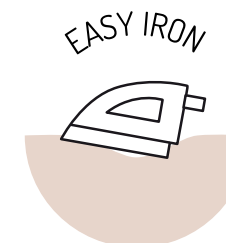
## Recycled polyester and Sustainable cotton

OXIGENO is our collection of sustainable products.

In this collection we highlight our twill produced using recycled polyester and sustainable cotton with BCI (Better Cotton Initiative) certificate. The recycled polyester is made from recycled materials such as clear plastic bottles. These bottles would otherwise go into landfill and it would take 1,000 years for them to biodegrade.

This is a great choice for those who are looking for a resistant fabric without giving up respect for our environment.

Sustainable fabric, Industrial washing, easy ironing and great durability are among the main characteristics of this fabric.



Composition:

**65% RECYCLED POLYESTER - 35% SUSTAINABLE COTTON**

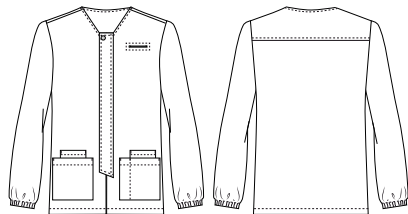
Grammage:

**175 gr/m<sup>2</sup>**





**1174** MEN'S SUSTAINABLE LONG SLEEVE TUNIC

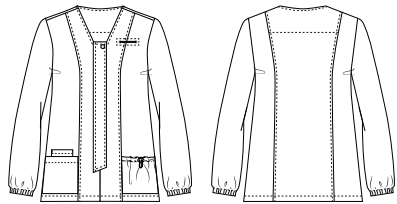


001 White

SIZES: XS - 2XL



**1144** WOMEN'S SUSTAINABLE LONG SLEEVE TUNIC



001 White

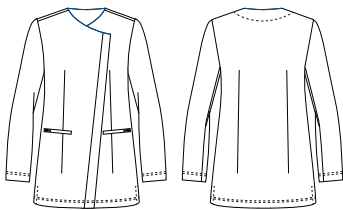
SIZES: XS - 2XL







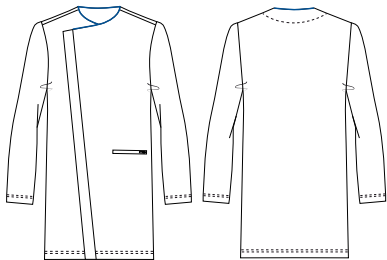
**1056** WOMEN'S SUSTAINABLE COAT ASYMMETRICAL CLOSURE WITH PIPING



001 White

SIZES: XS - 2XL

**1006** MEN'S SUSTAINABLE COAT ASYMMETRICAL CLOSURE WITH PIPING



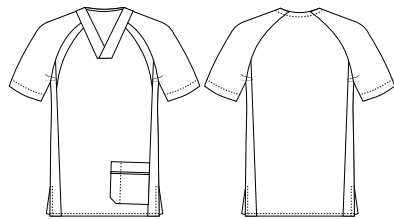
001 White

SIZES: XS - 2XL





**1193** UNISEX FOUR-COLOUR JACKET RECYCLED  
AND NATURA® FABRIC



043 Scarlet

153 Aquamarine

284 Pistachio

SIZES: XS - 2XL

This reference is manufactured in several materials.

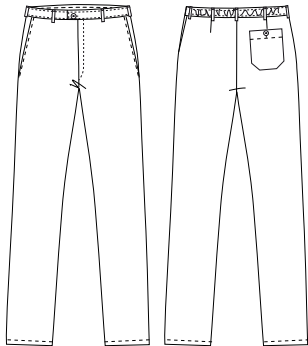
Composition:  
13% POLYESTER - 39% RECYCLED POLYESTER - 9% NATURA®  
18% COTTON - 21% BCI COTTON







**1708** UNISEX TROUSER WITH BACK ELASTIC WAIST  
SUSTAINABLE FABRIC



001 White

SIZES: **XS - 2XL**



## TWILL / INDANTHRENE® COLORS

The resistance of our 195 gr polycotton twill merged with the solidity of the Indanthrene® colors makes these clothes to be very long-lasting.

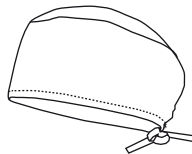


Composition:  
**67% POLYESTER - 33% COTTON**  
Grammage:  
**195 gr/m<sup>2</sup>**





**588** ADJUSTABLE SCRUB CAP



001 White

ONE SIZE

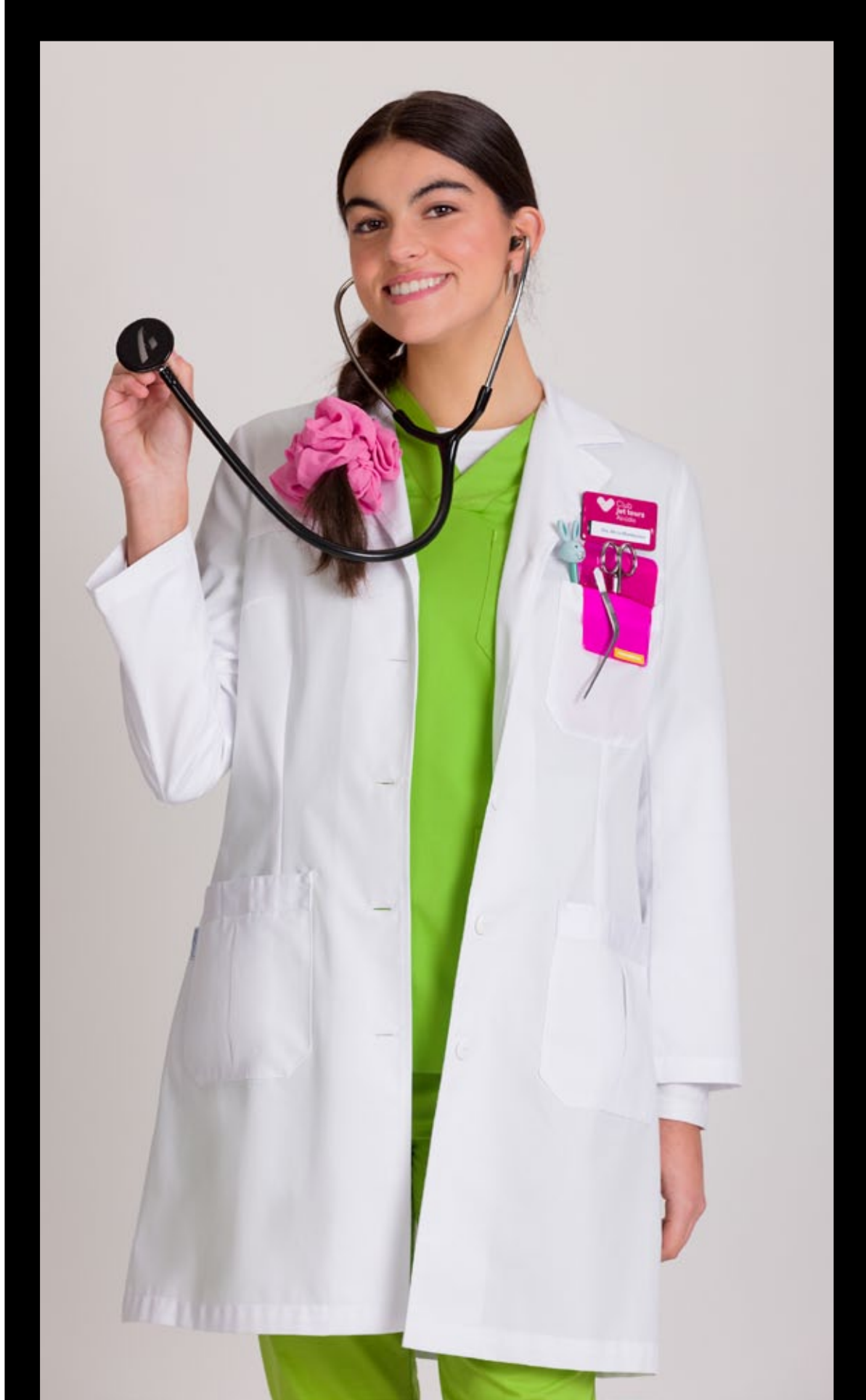
**1012** MEN'S COAT LAPELED COLLAR



001 White

SIZES: XS - 2XL





**1091** WOMEN'S COAT LAPELED COLLAR



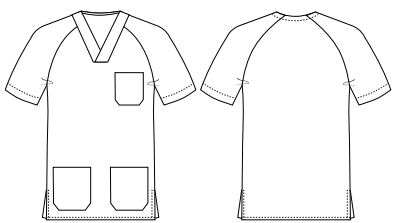
○ 001 White

SIZES: XS - 2XL





**1194** UNISEX SHORT SLEEVE SCRUB



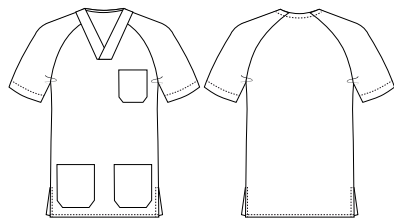
○ 001 White

SIZES: XS - 2XL





1184 UNISEX SHORT SLEEVE SCRUB



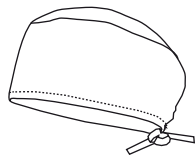
- 153 Aquamarine
- 285 Blue
- 284 Pistachio
- 286 Lilac

SIZES: XS - 2XL

INDANTHRENE® COLORS



**589** ADJUSTABLE SCRUB CAP

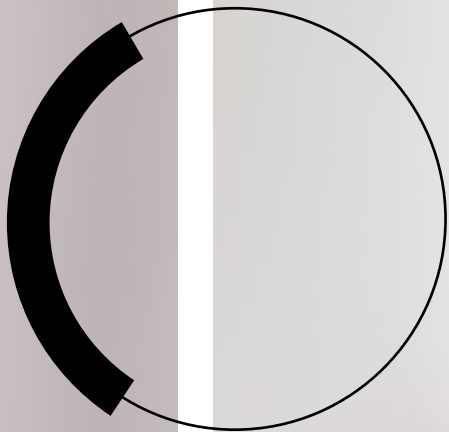


- 153 Aquamarine
- 284 Pistachio
- 285 Blue
- 286 Lilac

ONE SIZE

INDANTHRENE® COLORS





Beauty  
*and*  
Healthcare

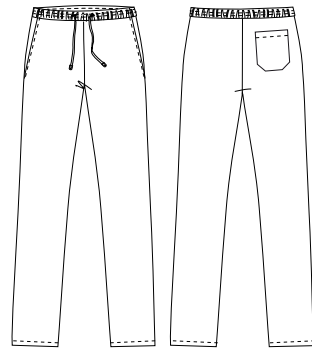
INDANTHRENE® COLORS







**90** UNISEX ELASTIC WAIST SCRUB TROUSERS



001 White

023 Sand

024 Chocolate

153 Aquamarine

284 Pistachio

285 Blues

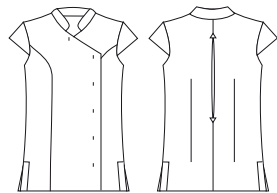
286 Lilac

SIZES: XS - 2XL

INDANTHRENE® COLORS



**1107** WOMEN'S SHORT SLEEVE TUNIC MAO COLLAR

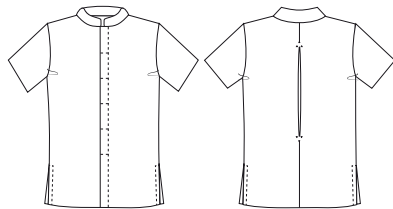


● 000 Black

SIZES: XS - 2XL



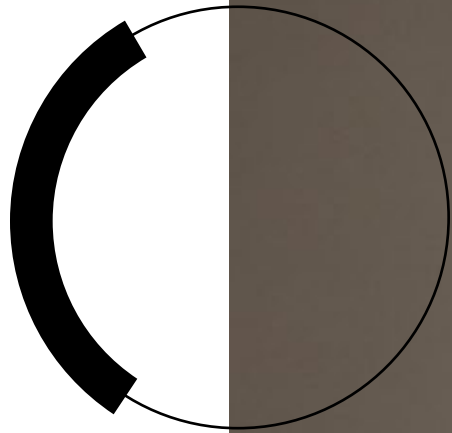
**1197** MEN'S SHORT SLEEVE TUNIC MAO COLLAR



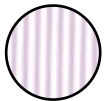
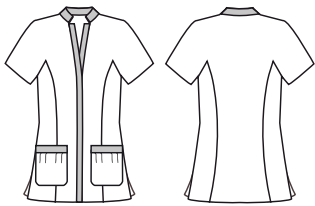
● 000 Black

SIZES: XS - 2XL

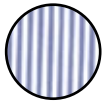




**1123** WOMEN'S RANGLAN SLEEVE TUNIC



216 White + lilac stripe



224 White + blue stripe

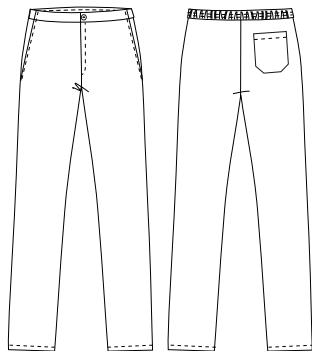


234 White + brown stripe

SIZES: 0 - 12



**83** UNISEX BACK ELASTIC WAIST TROUSERS COLORS

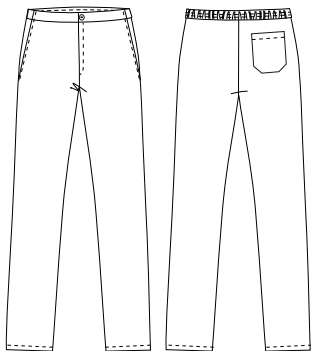


● 000 Black

● 188 Blue **INDANTHRENE® COLOR**

SIZES: XS - 2XL

**82** UNISEX BACK ELASTIC WAIST TROUSERS



○ 001 White

SIZES: XS - 2XL





**norvil**

**Beauty  
*and*  
Healthcare**

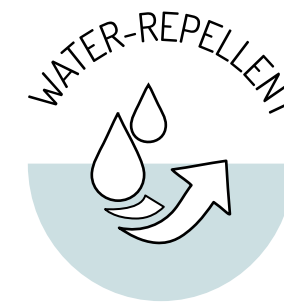
**4**

**ANTIBACTERIAL  
MICROFIBER**



## ANTIBACTERIAL MICROFIBER

This fabric has a high resistance to diluted bleach splashes. Moreover, it has antibacterial and antifungal properties. It reduces body odor and it is a very breathable fabric. In addition, it has a water-repellent finish. It allows industrial washing and it is quick drying. It does not need to be ironed.



Composition:  
**100% POLYESTER**  
Grammage:  
**150 gr/m<sup>2</sup>**

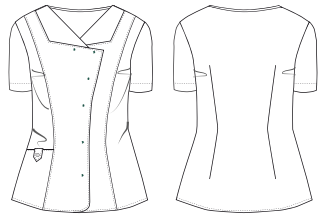






- 011 Light blue
- 019 Navy
- 081 Turquoise
- 090 Plum

**1170** WOMEN'S SHORT SLEEVE MICROFIBER ANTIBACTERIAL TUNIC



SIZES: XS - 2XL





**1170** WOMEN'S SHORT SLEEVE MICROFIBER  
ANTIBACTERIAL TUNIC





**1172** WOMEN'S SHORT SLEEVE BICOLOR  
MICROFIBER ANTIBACTERIAL TUNIC



181 White + turquoise

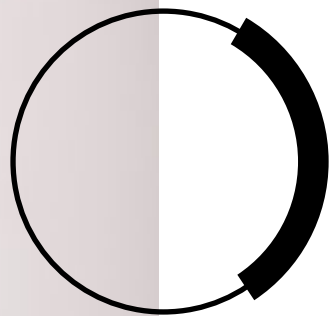
190 White + plum

SIZES: **XS - 2XL**

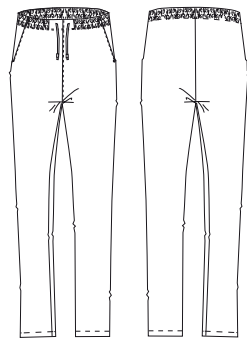








**1719** UNISEX ELASTIC WAIST MICROFIBER  
ANTIBACTERIAL SCRUB TROUSERS



- 011 Light blue
- 019 Navy
- 081 Turquoise
- 090 Plum

SIZES: XS - 2XL



**norvil**

Beauty  
*and*  
Healthcare

5

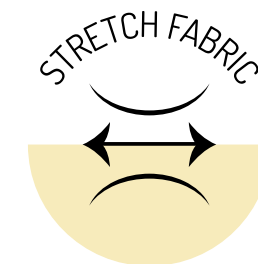
STRETCH  
MICROFIBER





## STRETCH MICROFIBER

Our stretch microfiber is a light, comfortable and highly elastic fabric.  
It can be easily maintained.



Composition:

**86% POLYESTER - 14% ELASTANE**

Grammage:

**118 gr/m<sup>2</sup>**



Beauty  
*and*  
Healthcare

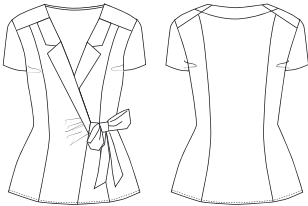



1100 WOMEN'S KIMONO M/C  
STRETCH MICROFIBER

**norvil**





**1100** WOMEN'S KIMONO M/C  
STRETCH MICROFIBER

  000 Black  
 005 Gray  
 019 Navy

SIZES: XS - 2XL



Beauty  
and  
Healthcare

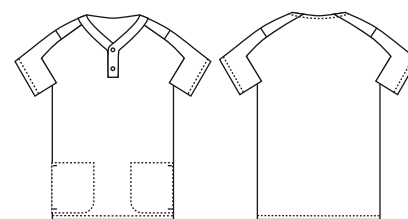


**norvil**

**1171** MEN'S BICOLOR TUNIC SHORT SLEEVE  
STRETCH MICROFIBER



**1171** MEN'S BICOLOR TUNIC SHORT SLEEVE  
STRETCH MICROFIBER

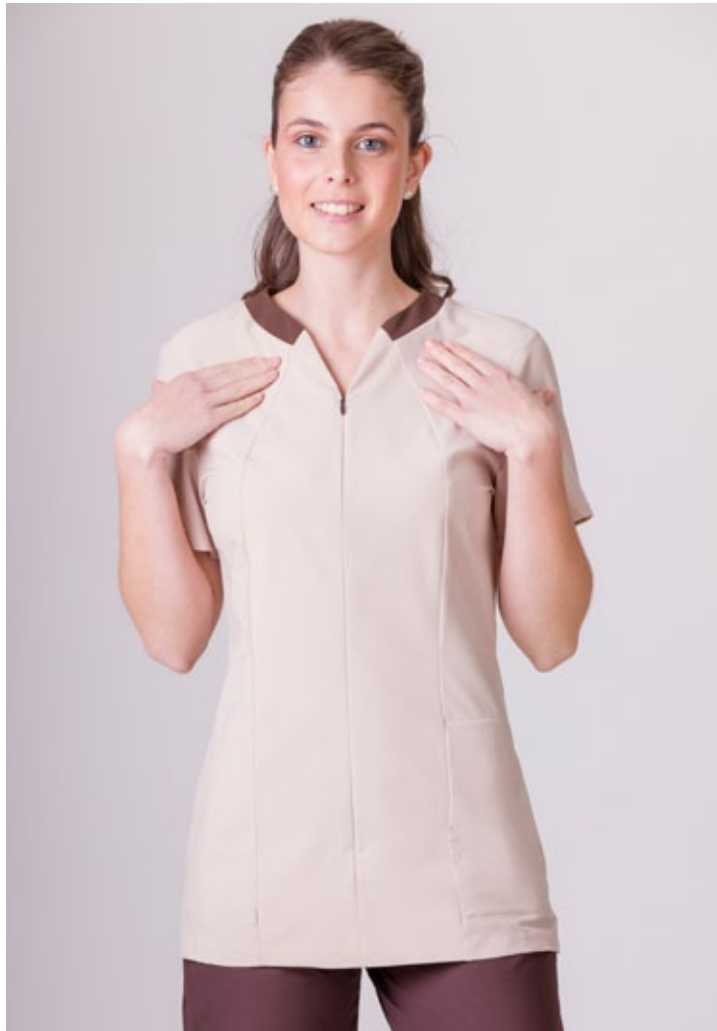


● 158 Navy + gray

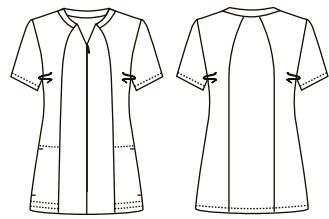
○ 159 Gray + black

SIZES: XS - 2XL





**1121** WOMEN'S BICOLOR TUNIC SHORT SLEEVE  
STRETCH MICROFIBER

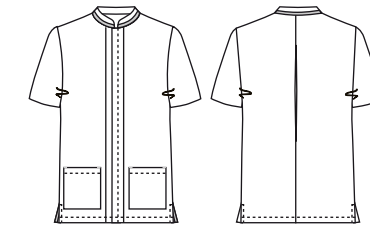


- 158 Navy + gray
- 159 Gray + black
- 319 Beige + brown

SIZES: XS - 2XL

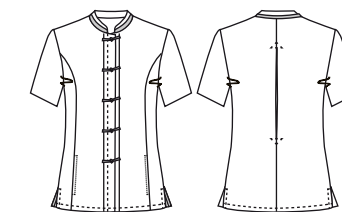


**1192** MEN'S SHORT SLEEVE  
STRETCH MICROFIBER TUNIC



SIZES: XS - 2XL

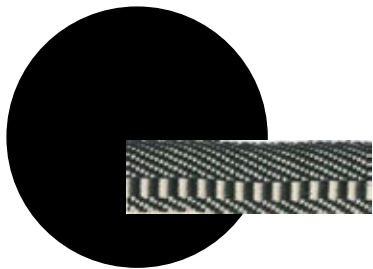
**1142** WOMEN'S SHORT SLEEVE  
STRETCH MICROFIBER TUNIC



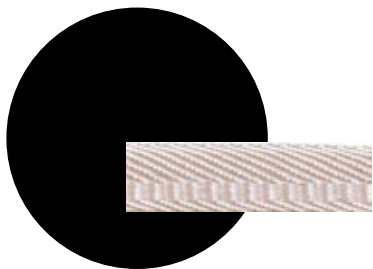
SIZES: 0 - 12



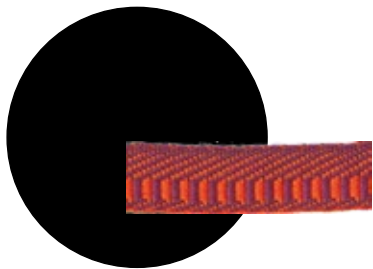
Beauty  
*and*  
Healthcare



000 Black



023 Sand



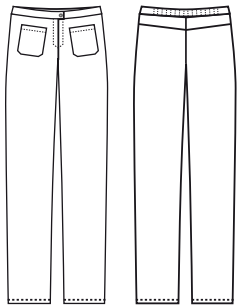
080 Fuchsia



**norvil**



**95** WOMEN'S STRETCH MICROFIBER TROUSERS



000 Black

019 Navy

SIZES: XS - 2XL



**6**

**OTHER  
TEXTURES**





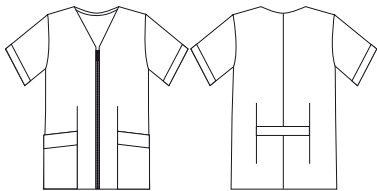
# PIQUE

A classic fabric characterized by fine ribbing.



Pique composition:  
**60% POLYESTER - 40% COTTON**

**1150** Women's short sleeve bicolor tunic with zip



○ 001 White

◐ 218 Blue

◑ 220 Black

SIZES: **0 - 12**







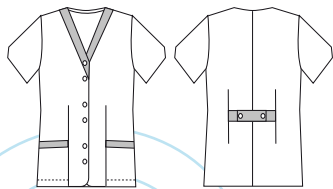
# SEERSUCKER

Cotton-rich fabric with a seersucker finish that gives it a peculiar look. Its wrinkled effect allows the skin to breathe better. It is a very lightweight and soft fabric.



Cotton-rich Seersucker composition:  
**65% COTTON - 35% POLYESTER**

**1127** WOMEN'S SHORT SLEEVE TUNIC GINGHAM SEERSUCKER



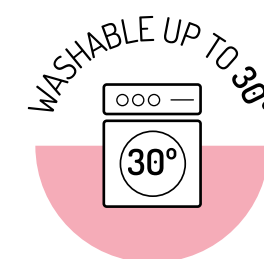
 000 Black gingham + white twill

SIZES: 0 - 12



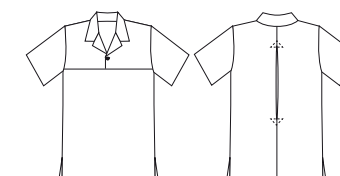
## COTTON-RICH POPLIN

Light and fresh cotton-rich fabric.



Cotton-rich Poplin composition:  
**55% COTTON - 45% POLYESTER**

**1186** UNISEX SHORT SLEEVED TUNIC



● 000 Black

SIZES: **X - 2XL**





7

**HYGIENIC  
PRODUCTS**

# norvil

## norvil protect

Norvil Protect is our line of products designed to protect you  
and to protect others.  
Hygienic products are made of disposable and also reusable  
fabrics.



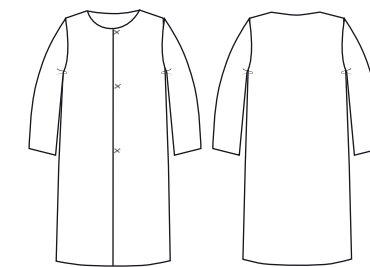


Beauty  
and  
Healthcare



**norvil**

**BATM04** HYGIENIC GOWN WITH VELCRO CLOSURE



○ 001 White

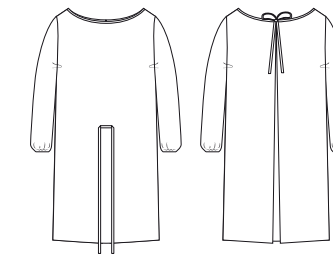
ONE SIZE

TST composition:  
**100% POLYPROPYLENE**





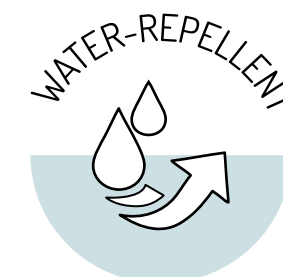
**BATM01** HYGIENIC GOWN OPEN BACK



○ 001 White

**ONE SIZE**

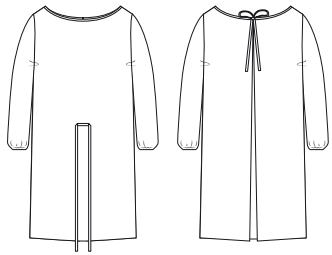
TST composition:  
**100% POLYPROPYLENE**







**BATM03** HYGIENIC REUSABLE GOWN OPEN BACK



○ 001 White

ONE SIZE

Microfiber composition:  
**100% POLYESTER**



Fabrics are tested according to UNE-EN14683,  
UNE0065: 2020 and CEE / 93/42.  
Approved by AITEX.  
They support up to 25 washes cycles.



**GORR001** HYGIENIC CAP WITH ELASTIC AROUND THE EDGE



**MANG01** HYGIENIC SLEEVES WITH ELASTIC CUFF



**CALZA01** HYGIENIC SHOE COVER WITH ELASTIC AROUND THE EDGE

TST composition:  
**100% POLYPROPYLENE**

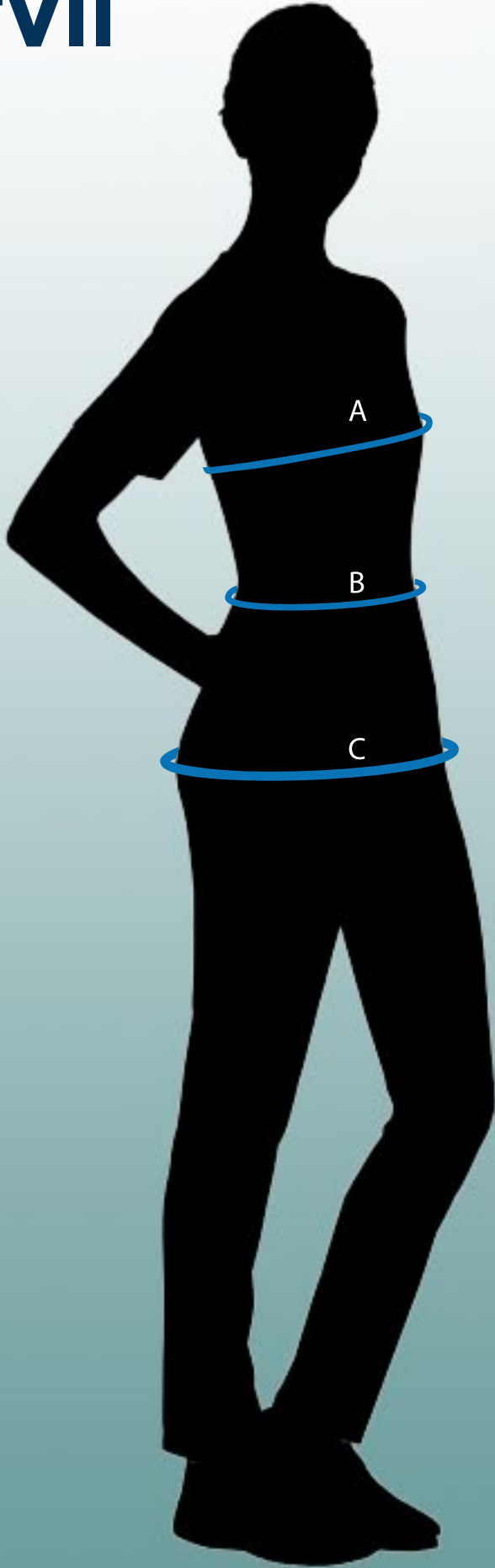




We can also provide you with a wide range catalogue of hygienic products  
such as masks, gloves, among others.

**CONTACT US!**





CASACAS y BATAS · Tunics and Coats · Tuniques et Blouses

TALLAS Sizes · Tailles	0		2		4		6		8		10	
	XS		S		M		L		XL		2XL	
A PECHO cm chest · poitrine	78	82	86	90	94	98	102	106	110	114	118	122
B CINTURA cm waist · tour de taille	60	64	68	72	76	80	85	90	95	100	105	110
C CADERA cm hip · tour de bassins	84	88	92	96	100	104	109	114	119	124	129	134

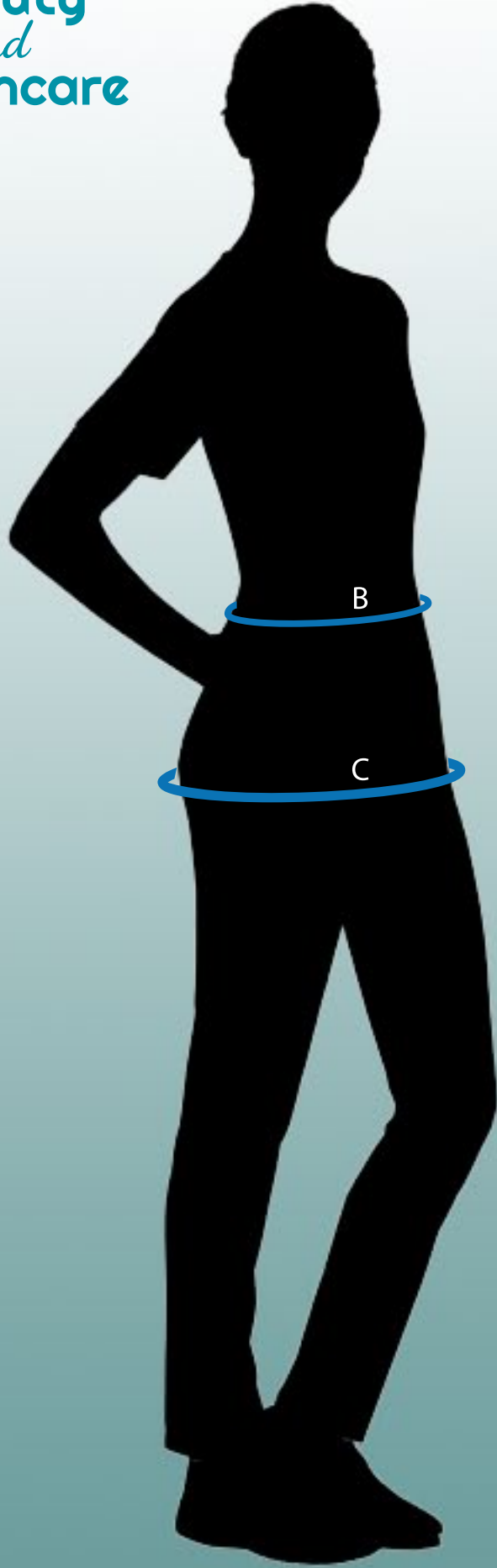
TALLAS INTERNACIONALES · International sizes · Tailles internationales

UK - IRL	6	8	10	12	14	16	18	20	22	24	26	28
Holland - Germany Switzerland - Scandinavia	32	34	36	38	40	42	44	46	48	50	52	54
France - Portugal	34	36	38	40	42	44	46	48	50	52	54	56
Italia	38	40	42	44	46	48	50	52	54	56	58	60
USA - México	4	6	8	10	12	14	16	18	20	22	24	26





SIZE GUIDE · Woman

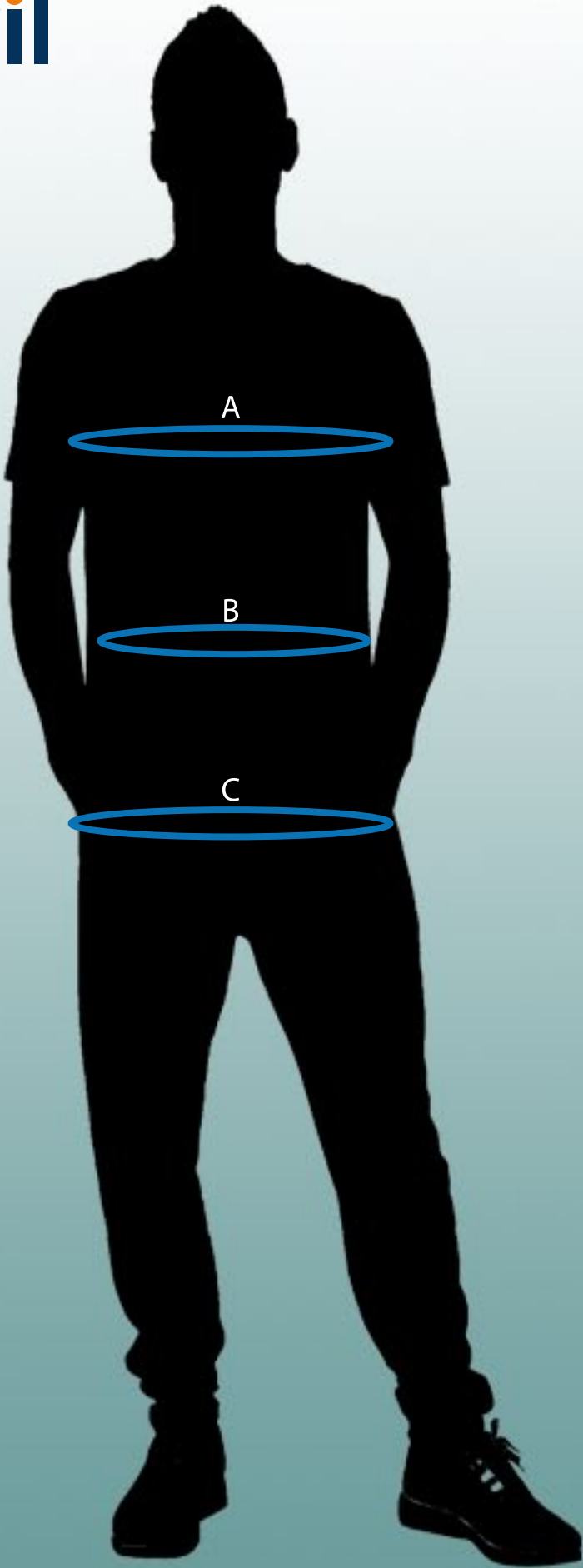


PANTALÓN · Trousers · Pantalon

TALLAS Sizes · Tailles	XS		S		M		L		XL		2XL	
<b>B</b> CINTURA cm waist · tour de taille	60	64	68	72	76	80	85	90	95	100	105	110
<b>C</b> CADERA cm hip · tour de bassins	84	88	92	96	100	104	109	114	119	124	129	134

TALLAS INTERNACIONALES · International sizes · Tailles internationales

UK - IRL	6	8	10	12	14	16	18	20	22	24	26	28
Holland - Germany Switzerland - Scandinavia	32	34	36	38	40	42	44	46	48	50	52	54
France - Portugal	34	36	38	40	42	44	46	48	50	52	54	56
Italia	38	40	42	44	46	48	50	52	54	56	58	60
USA - México	4	6	8	10	12	14	16	18	20	22	24	26



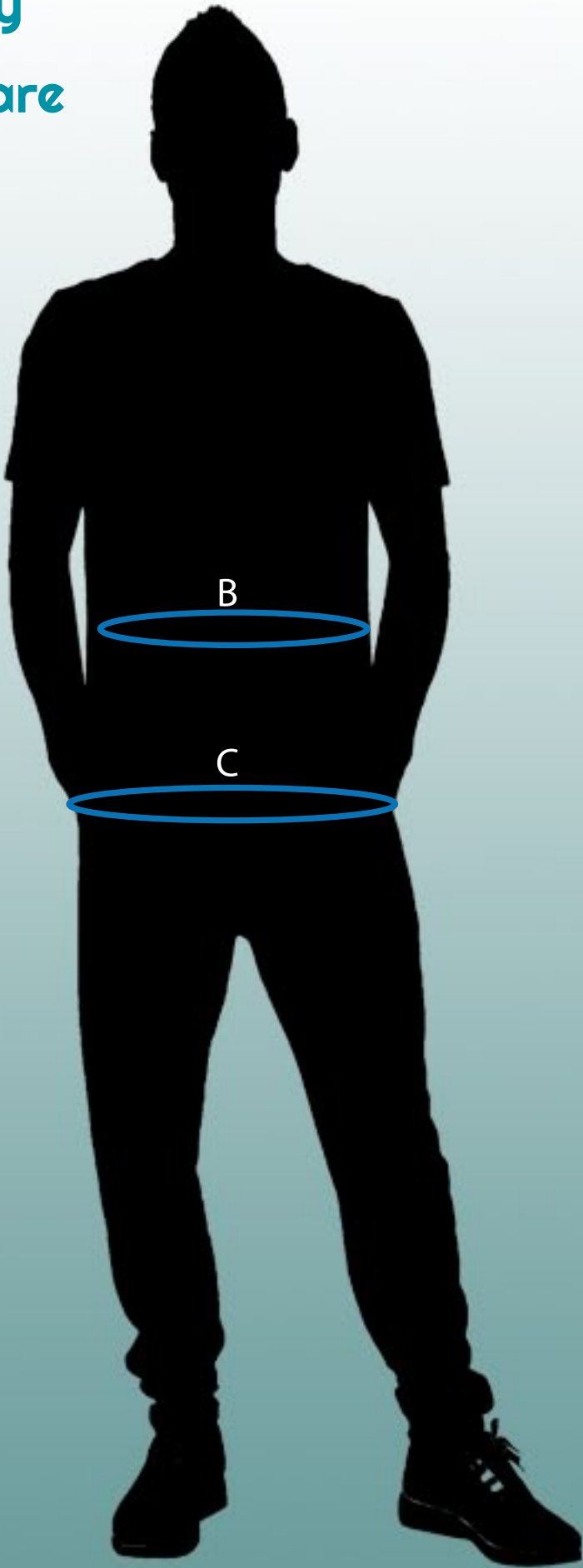
CASACAS y BATAS · Tunics and Coats · Tuniques et Blouses

TALLAS Sizes · Tailles	XS	S	M	L	XL	2XL	3XL	4XL	5XL	
A PECHO cm chest · poitrine	76 - 80	84 - 88	92 - 96	100 - 104	108 - 112	116 - 120	124 - 128	132 - 136	140 - 144	
B CINTURA cm waist · tour de taille	68	72	76	80	84	88	92	96	100	104
C CADERA cm hip · tour de bassins	88	92	96	100	104	108	112	116	120	124

TALLAS INTERNACIONALES · International sizes · Tailles internationales

Tallas europeas European sizes Tailles européennes	35	37	39	41	43	45	46	48	50	52
UK - IRL - USA México	13 3/4	14 1/2	15 1/2	16	17	17 3/4	18	19	19 3/4	20 1/2





PANTALÓN · Trousers · Pantalon

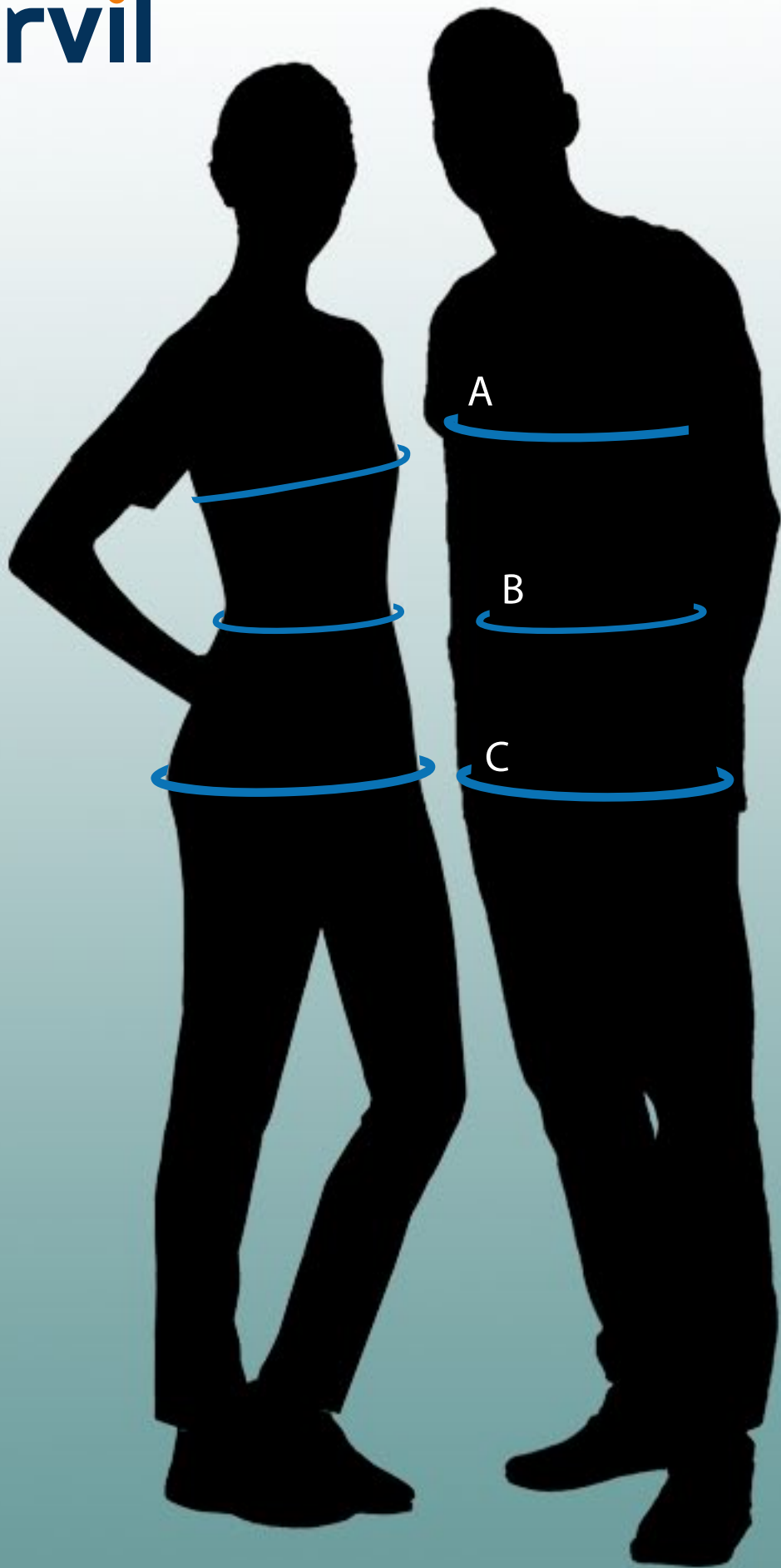
TALLAS Sizes · Tailles		S		M		L		XL		2XL		3XL		4XL	
B	CINTURA cm	68	72	76	80	84	88	92	96	100	104	108	112	116	120
	waist · tour de taille														
C	CADERA cm	88	92	96	100	104	108	112	116	120	124	128	132	136	140
	hip · tour de bassins														

TALLAS INTERNACIONALES · International sizes · Tailles internationales

Holland Germany Switzerland Scandinavia	40	42	44	46	48	50	52	54	56	58		60	62 - 64	66
France Portugal	34	36	38	40	42	44	46	48	50	52	54	56	58	60
UK - IRL - USA México	24	26	28	30	32	34	36	38	40	42	44	46	48	50
Italia	38	40	42	44	46	48	50	52	54	56	58	60	62	64



SIZE GUIDE · Unisex



CASACAS y BATAS · Tunics and Coats · Tuniques et Blouses

TALLAS Sizes · Tailles	XS	S	M		L		XL		2XL		3XL	
A PECHO cm chest · poitrine	84	88	92	96	100	104	108	112	116	120	124	128
B CINTURA cm waist · tour de taille	68	72	76	80	84	88	92	96	100	104	108	112
C CADERA cm hip · tour de bassins	88	92	96	100	104	108	112	116	120	124	128	132

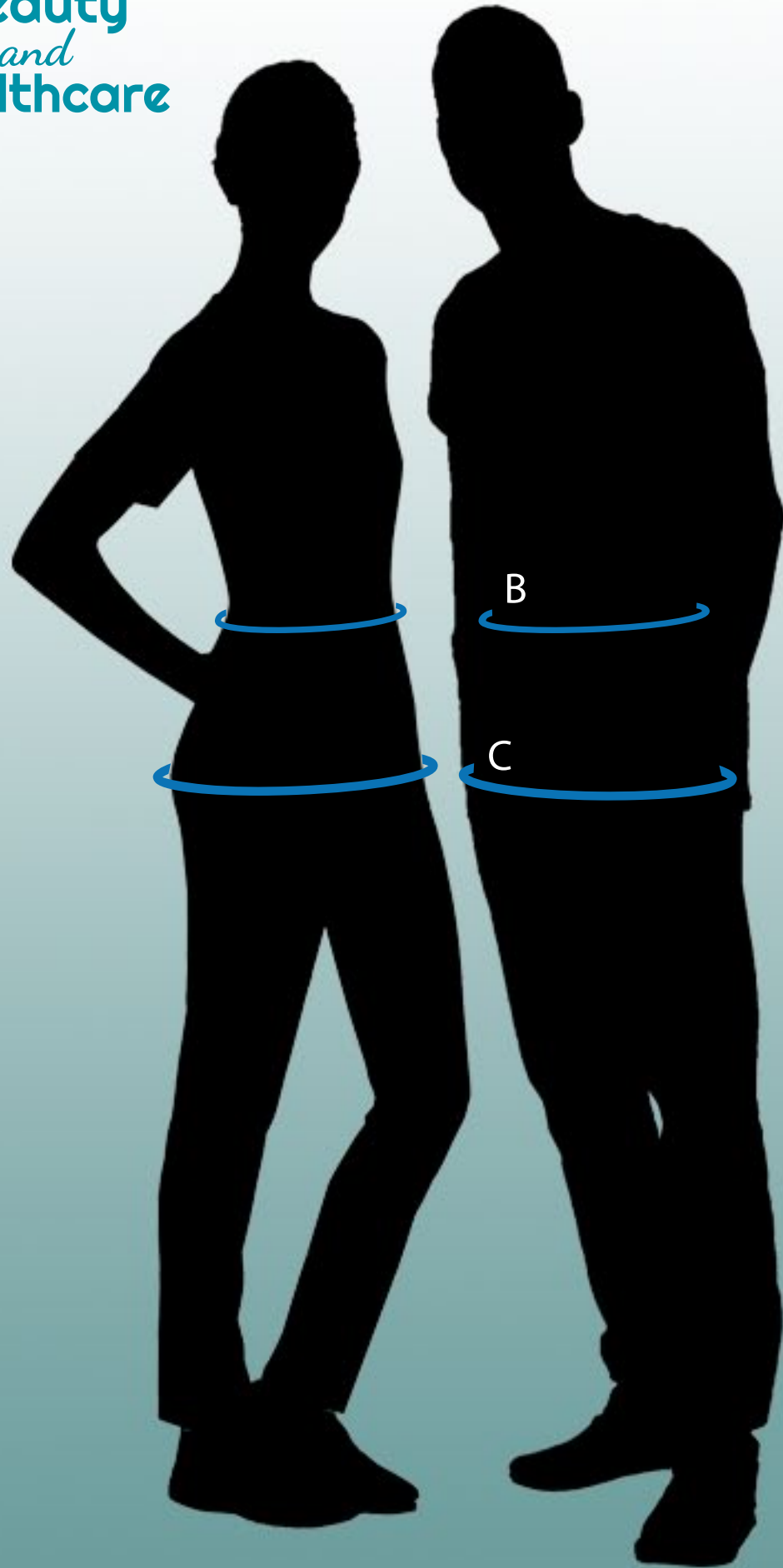
TALLAS INTERNACIONALES · International sizes · Tailles internationales

UK - IRL - France Portugal - Italia	XS	S	M	L	XL	2XL	3XL
Switzerland Scandinavia	XS		S	M	L	XL	2XL
USA	XXS	XS	S	M	L	XL	2XL
México	EP	P	MX	G	EG	EGG	





SIZE GUIDE · Unisex



PANTALÓN · Trousers · Pantalon

TALLAS Sizes · Tailles	XS	S	M		L		XL		2XL		3XL	
<div>B</div> <div>CINTURA cm waist · tour de taille</div>	68	72	76	80	84	88	92	96	100	104	108	112
<div>C</div> <div>CADERA cm hip · tour de bassins</div>	88	92	96	100	104	108	112	116	120	124	128	132

TALLAS INTERNACIONALES · International sizes · Tailles internationales

UK - IRL - France Portugal - Italia	XS	S	M	L	XL	2XL	3XL
Switzerland Scandinavia	XS		S	M	L	XL	2XL
USA	XXS	XS	S	M	L	XL	2XL
México	EP	P	MX	G	EG	EGG	



COATS



1007

p. 23



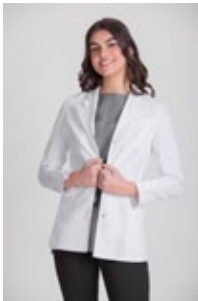
1067

p. 24



1005

p. 30



1053

p. 29



1006

p. 42



1056

p. 42



1012

p. 47



1091

p. 48



BATM01

p. 86



BATM03

p. 87



BATM04

p. 85

TUNICS



1146

pp. 5 - 6



1149

pp. 7 - 8



1147

p. 9



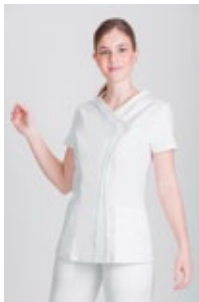
1728

p. 15



1140

pp. 25 - 26



1176

pp. 31 - 32



1168

pp. 32 - 33



1141

p. 34



1177

pp. 35 - 36



1178

p. 37



1174

p. 39



1144

pp. 40 - 41





MODEL LIST

TUNICS



1193

pp. 43 - 44



1194

p. 49



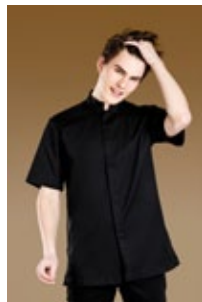
1184

pp. 50 - 52



1107

p. 54



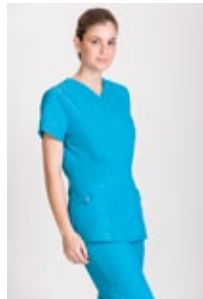
1197

p. 54



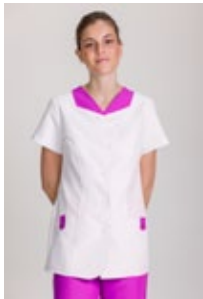
1123

p. 55



1170

pp. 58 - 61



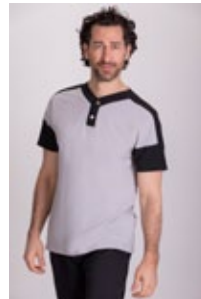
1172

pp. 62 - 63



1100

pp. 67 - 68



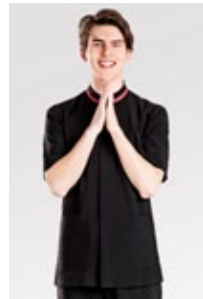
1171

pp. 69 - 70



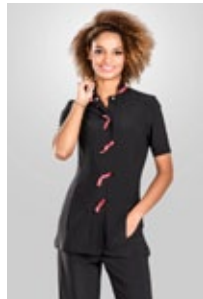
1121

p. 71



1192

pp. 72 - 73



1142

pp. 72 - 73



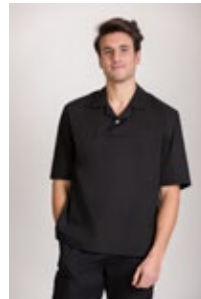
1150

pp. 76



1127

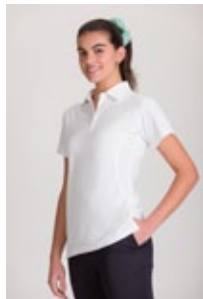
p. 77



1186

p. 78

POLO-SHIRTS and T-SHIRTS



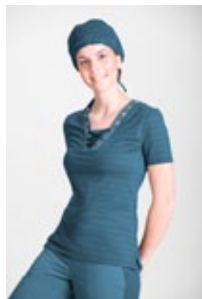
1724

p. 19



1722

p. 20



1739

pp. 10 - 11



1732

p. 16



1738

p. 17



MODEL LIST

TROUSERS

	<b>1718</b>  p. 8		<b>1717</b>  p. 12		<b>1715</b>  p. 18		<b>1709</b>  p. 27		<b>1708</b>  p. 45		<b>90</b>  p. 53
	<b>83</b>  p. 56		<b>82</b>  p. 56		<b>1719</b>  p. 64		<b>95</b>  p. 74				

CAPS and HYGIENICS

	<b>588</b>  p. 47		<b>589</b>  p. 51		<b>593</b>  p. 10		<b>GORR001</b>  p. 84		<b>MANG01</b>  p. 84		<b>CALZA01</b>  p. 84
---	-------------------------	---	-------------------------	---	-------------------------	---	-----------------------------	---	----------------------------	---	-----------------------------







**norvil**

*siente tu uniforme*

**Beauty  
*and*  
Healthcare**

CATALOGUE 2021